

JOYPUR PANCHANAN ROY COLLEGE

P.O.- JOYPUR-FAKIRDAS, AMTA-II, HOWRAH-711401, WEST BENGAL.



SELF STUDY REPORT 2015

IN RESPECT OF REACCREDITATION, SECOND CYCLE.



Website: www.joypurproycollege.in E-mail: joypurcollege@yahoo.in

Contact No. 03214-234-130

Principal: 09732749040

জয়পুর পঞ্চানন রায় কলেজ

(কলিকাতা বিশ্ববিদ্যালয় অনুমোদিত)

পোঃ-জয়পুর-ফকিরদাস * আমতা-২
হাওড়া-৭১১৪০১ (পঃ বঃ)



JOYPUR PANCHANAN ROY COLLEGE

(Affiliated to the University of Calcutta)

P.O. : Joypur-Fakirdas * Amta-II
Howrah - 711401 (W.B.)

From Kolkata : 03214-234 130
S.T.D. Code : (03214)

Ref. No. 62/P/NAAC-SSR/2015

Date 14.10.2015

Website: www.joypurproycollege.in

E-mail: joypurcollege@yahoo.in

To
The Director,
National Assessment and Accreditation Council (NAAC),
P.O. Box no: 1075, Nagarbhavi,
Bangalore- 560072,
India

Sub.: Uploading the SSR-2015 of Joypur Panchanan Roy college, P.O.- Joypur-Fakirdas, Amta-II, Howrah-711401, West Bengal in respect of Reaccreditation, (Second Cycle) in our Institutional Website: www.joypurproycollege.in as per the Requirements of LOI

Sir,

With due respect and honour. I beg to inform you that we are uploading our Self Study Report 2015 in respect of Reaccreditation (Second Cycle) in our institutional website: www.joypurproycollege.in as per the requirements of LOI. This report presents a true picture of our College situated in a remote rural area and we have tried to highlight both our strengths and weaknesses.

We hope that the NAAC Peer Team will validate our self assessment by way of paying their visit to our institution and through their observations.

We earnestly wait for the visit of the NAAC Peer Team.

Thanking you,



Yours faithfully,

(SAUMITRA SARKAR)
Principal & Secretary
Joypur Panchanan Roy College
P.O.- Joypur-Fakirdas, Amta-II
Dist. : Howrah - 711 401

CONTENTS:-

Items

Preface

A. Executive

B. Profile of the College

C. Criterion wise Analytical Report

Criterion I: Curricular Aspects

Criterion II: Teaching, Learning and Evaluation

Criterion III: Research, Consultancy and Extension

Criterion IV: Infrastructure and Learning Resources

Criterion V: Student Support and Progression

Criterion VI: Governance, Leadership and Management

Criterion VII: Innovations and Best Practices

D. Post NAAC Initiatives

E. Evaluative Reports of the Departments:

Department of Bengali

Department of English

Department of History

Department of Education

Department of Philosophy

Department of Political Science

Department of Physical Education

Department of Commerce

F. Declaration by the Head of the Institution

G. Certificate of Compliance

H. Appendix

Annexure I- Certificate of recognition from the affiliating University

Annexure II- Certificate of recognition of the college
under UGC Act of 2(f) & 12B

Annexure III NAAC Accreditation Certificate of Cycle 1

Annexure IV- Master Plan of the College

Annexure V- Layout of the College Library

Preface

Established in 1986, Joypur Panchanan Roy College is situated in the village of Joypur, Amta-II which is one of the geographically remotest places in the district of Howrah. Joypur is actually a part of the delta of the rivers of Damodar and Mundeswari. The area becomes cut off from the rest of the district in the rainy season as the floods are the recurring phenomenon every year. The waters are released from the reservoirs and Joypur and Amta-II gets submerged being low-lying areas.

Being situated in such a place, the College mainly caters to the needs of the local people who are mainly from the agricultural community and first generation learners. Joypur Panchanan Roy College has provided an opportunity to them who otherwise would have been deprived of pursuing Higher Education. Since its establishment, the College has been trying within its limited resources to stand by the needs of the villagers and help them fulfill their dream of getting university recognized higher education. At present, the College can offer only Honours and General courses in B.A. and B. Com. and the College needs to introduce more courses to be really meaningful.

In spite of all our difficulties and limited resources, we approached NAAC in 2007 for accreditation and we are proud to declare that we were accredited as a C++ institution by NAAC. This time we approach NAAC for re-accreditation for the second cycle which should have been done in 2012 but as we have already stated, we had to go through some turbulent times mainly because of flood which has been of devastating nature in the last few years. But we are fixed in our aim to provide better education to the educationally backward area and therefore approach NAAC again to find areas of improvement and better service.

Executive Summary

The Executive Summary of the Self Study Report seeks to present a true picture of the College at present and the progress it has made since its accreditation in 2007. The College which started functioning from 7th September, 1986 with only 20 students and in a temporary tin shed has progressed over the years with its constant vision to be one of the best colleges in the district of Howrah providing quality education even in a geographically remote area. In spite of its limited resources and severe shortage of both Teaching and non-Teaching staff, the College has been able to make progress and earn name and respect from the local people. People of the area lying between the rivers of Damodar and Mundeswari, having agriculture as their only source of income, do not have to travel to the distant city to get higher education. The following is a summary of the key areas where progress is noticeable as per the seven point criterion.

Criterion I: Curricular Aspects:

Joypur Panchanan Roy College being an affiliated of the University of Calcutta does not have scope for curriculum development. Rather it follows the syllabus and the guidelines of the parent university. At present, the College offers seven three year under- graduate degree programmes: four B.A. Honours courses in the subjects of Bengali, English, History and Education, B.Com. Honours course in Accountancy and B.A. and B.Com. General courses. At the same time, the College functions as one of the Study centres of Netaji Subhas Open University where the student can get enrolled for the BDP courses. In addition, the College is the Admission centre for the PG programmes of NSOU. The primary job of the College is to cover the syllabus and follow the academic calendar supplied by the University of Calcutta to all its affiliated colleges. Being situated in a rural area, the College has to face the challenge of providing education mostly to the first generation of learners. A close watch is kept on the progress of course work and the time schedule regarding admission, registration, submission of examination forms is strictly maintained. Attempts are made to be as student friendly as possible. As a recognition of our service in the rural area, our beloved Principal Saumitra Sarkar has been conferred the SIKSHARATNA Award by the honourable Chief Minister of West Bengal in 2015.

Criterion II: Teaching, Learning and Evaluation:

The College has been striving to maintain teaching standards ever since its beginning. The IQAC sits with the teachers of the various departments at the beginning of the year so that they can understand the needs of the students and the College. The teachers attend the seminars conducted by the different colleges and the workshops conducted by the university to get acquainted with recent trends and demands of the syllabus. The College has been able to procure new computers and ICT enabled teaching is possible. New books are added each year, the internet facilities are available, projector can be used for effective teaching. The schedule of the university for conducting Midterm Tests and Annual tests is strictly followed and a record the marks is kept for monitoring the progress of the students.

Criterion III: Research, Consultancy and Extension:

The College as one of under-graduate institutions does not have much scope for research on its own. In spite of that, the College is ready to extend all possible helps to its faculty members if they are willing to pursue research work on their own. Any teacher can approach the Principal asking for permission and he/she is provided the necessary things like leave etc. The researcher can make use of the internet facilities and the books in the library.

The Extension activities of the College are mainly carried out by the NSS and its five units. The units organize annual camps in which surveys are conducted, the students take up the job of cleaning the environment, ponds and garbage. Plantation on a large scale takes place and the College NSS volunteers play very active roles particularly during the flood which is almost a recurring phenomenon each year as the area is among the low lying ones in the catchment areas of Damodar and Mundeswari.

Criterion IV: Infrastructure and Learning Resources:

In a rural area like Joypur, our constant aim has been to develop our infrastructure. As said earlier, from the tin shed we have moved to concrete building. At the time of 1st cycle accreditation, we had only seven classrooms in concrete building and the rest of the classes were still held in the tin shed where the students and the teachers had to sweat out in the heat. Now the built up area has increased to more than 1500 sq. mts. in three two storied blocks. As a mark of recognition of our contribution to social welfare in the field of relief work during flood, the West Bengal government is setting up a Flood Rescue Centre in our College campus. Two separate hostels, one for the boys and one for the girls are being built. This year the College office which used to function from a narrow room has been shifted to a spacious and newly constructed Administrative block.

Each year the number of computers has increased since 2007. At the time of first cycle accreditation, the College had only three assembled computers and two inkjet printers. The

College had no Xerox machines. Now the college has 18 branded computers. The office is connected to the internet. The IQAC room has internet connection, so is the library and the computer lab for the commerce students. The College has three Xerox machines, one LCD projector, purified cool drinking water supply. New spacious washrooms, one for the boys and another for the girls have been built. Work for another is in progress. The playground is being developed. All attempts are being made to make the college campus a student friendly zone.

Criterion V: Student Support and Progression:

The College has developed its dynamic website and all information regarding the different courses, eligibility criteria, reservation of seats, intake capacity etc. are uploaded there and any student can reach out to us through the website. At the same time, the College publishes its annual prospectus containing all the necessary details highlighting the achievements, the different activities, the holiday list, the facilities available etc.

The motto is to reach the unreached, the educationally deprived people and our aim is to bring every eligible H.S. pass-out of the area under the banner of college education. Different scholarships, like SC/ST, OBC, Minority, Vivekananda scholarship are available. Apart from these, the College on its own offers free and half-free studentship to the needy and disadvantaged group of students. The purpose is to see that all willing candidates get an opportunity to receive college education and no one is left out because of poverty.

Here the role of the Studentsø Union is commendable. The Studentsø Union is a democratically elected body and the election is held each year in a free and fair manner and the elected representatives and their General Secretary play perhaps the most important roles in bringing the student community closer to social needs and co-operation.

Criterion VI: Governance, Leadership and Management:

The College has a Governing Body elected as per the provisions of the statutes of the University of Calcutta. The Governing Body, headed by a President who happens to be an eminent person with the Principal as the ex-officio Secretary, is the highest decision making body of the College. The Governing Body has four Teacher members, two non-Teaching representatives, two Government representatives, two University nominees, two Donor members, Sabhapati of the local Panchayet Samiti and the General Secretary of the Studentsø Union. The Governing Body is responsible for the over-all development of the College.

Apart from that, there are various committees to look after specific areas such as the library, the accounts, the academic and the sports. These committees look after the functioning of

the specific areas and the progress reports are placed before the principal and the Governing Body for approval.

Criterion VII: Innovations and Best Practices:

The College has already completed 28 years since its establishment and the years have been years of change. On completion of 25 years of existence, a grand function was held to mark the silver Jubilee. The busts of eminent persons of Bengal were set up. The face of the College has changed so much in the recent years that any old timer is surprised when he compares then and now.

Whatever the outward changes, the mission of the College remains the same, that is, to stand by the educationally deprived people and fulfill their dream of college education. That is the best practice that we have followed over the past years. With all our limitations and resources, we have tried hard to serve the needy and the under privileged agricultural community of this flood-hit area and feel proud and happy when we see our students getting established in their life by way of government service or by means of other employment. Though much is done, we admit much more remains to be done.

SWOC Analysis

Strength:

- ◆ All the regular courses are approved by University of Calcutta
- ◆ All the Distance Education Courses are approved by NSOU
- ◆ Cordial relationship between the teachers and the students.
- ◆ Pollution free environment with plenty of trees and play areas.
- ◆ Improved library facilities
- ◆ NSS activities towards welfare of society
- ◆ Active and very cooperative Students' Union

Weakness:

- ◆ Geographical location, a flood prone area
- ◆ Communication and commutation facilities inadequate
- ◆ First generation of learners
- ◆ Lack of adequate infrastructure
- ◆ Severe shortage of full time permanent teachers
- ◆ Vacant posts in both library and office

Opportunities:

- ◆ Scope of service among the under privileged people in the rural area
- ◆ Scope of introducing new and job oriented courses
- ◆ Scope of expansion of facilities

Challenges:

- ◆ Mushrooming of coaching centres even in the villages
- ◆ Difficulty to organize lectures by eminent personalities because of its geographical location
- ◆ Training the first generation learners from economically backward agricultural community to earn their bachelor degree.

1. Profile of the Affiliated College

1. Name and Address of the College:

Name :	JOYPUR PANCHANAN ROY COLLEGE	
Address :	P.O.- JOYPUR-FAKIRDAS, AMTA-II, DIST.-HOWRAH	
City :	Pin : 711401	State : WEST BENGAL
Website :	www.joypurproycollege.in	
Email :	joypurcollege@yahoo.in	

2. For Communication:

Designation	Name	Telephone with STD code	Mobile	Fax	Email
Principal	SAUMITRA SARKAR	O:03214234130 R:03214238504	9732749040	í í í	joypurcollege@yahoo.in
Vice Principal		O: R:			
Steering Committee Co-ordinator	SMRITIRAN JAN PRAMANIK	O: 03214234130 R: 9433364125	9830400681	í í í	smritiranjnpramanik@yahoo.co.in

3. Status of the Institution:

Affiliated College	<input checked="" type="checkbox"/>
Constituent College	<input type="checkbox"/>
Any other (specify)	<input type="checkbox"/>

4. Type of Institution:

a. By Gender	
i. For Men	<input type="checkbox"/>
ii. For Women	<input type="checkbox"/>
iii. Co-education	<input checked="" type="checkbox"/>
b. By Shift	
i. Regular	<input type="checkbox"/>
ii. Day	<input checked="" type="checkbox"/>
iii. Evening	<input type="checkbox"/>

5. It is a recognized minority institution?

Yes

No

If yes specify the minority status (Religious/linguistic/ any other) and provide documentary evidence.

NA

6. Sources of funding:

Government

Grant-in-aid

Self-financing

Any other

7. a. Date of establishment of the college: 07/09/1986 (dd/mm/yyyy)

b. University to which the college is affiliated /or which governs the college (If it is a constituent college)

UNIVERSITY OF CALCUTTA

c. Details of UGC recognition:

Under Section	Date, Month & Year (dd-mm-yyyy)	Remarks(If any)
i. 2 (f)	30-09-1995	Certificate enclosed
ii. 12 (B)	30-09-1995	Annexure-II

(Enclose the Certificate of recognition u/s 2 (f) and 12 (B) of the UGC Act)

d. Details of recognition/approval by statutory/regulatory bodies other than UGC (AICTE, NCTE, MCI, DCI, PCI, RCI etc.)

Under Section/ clause	Recognition/Approval details Institution/Department Programme	Day, Month and Year (dd-mm-yyyy)	Validity	Remarks
i.	NA			
ii.	NA			
iii.	NA			
iv.	NA			

(Enclose the recognition/approval letter)

8. Does the affiliating university Act provide for conferment of autonomy (as recognized by the

UGC), on its affiliated colleges?

Yes No

If yes, has the College applied for availing the autonomous status?

Yes No

9. Is the college recognized

a. by UGC as a College with Potential for Excellence (CPE)?

Yes No

If yes, date of recognition: í í í í í í í í (dd/mm/yyyy)

b. for its performance by any other governmental agency?

Yes No

If yes, Name of the agency í í NAí í í í í í and

Date of recognition: í í í í í í í í (dd/mm/yyyy)

10. Location of the campus and area in sq.mts:

Location *	RURAL
Campus area in sq. mts.	16215 sq mts.
Built up area in sq. mts.	1500 sq mts

(* Urban, Semi-urban, Rural, Tribal, Hilly Area, Any others specify)

11. Facilities available on the campus (Tick the available facility and provide numbers or other details at appropriate places) or in case the institute has an agreement with other agencies in using any of the listed facilities provide information on the facilities covered under the agreement.

Auditorium/seminar complex with infrastructural facilities

Sports facilities

play ground

swimming pool

gymnasium

Hostel

Boys' hostel

i. Number of hostels

ii. Number of inmates

iii. Facilities (mention available facilities)

*Girls' hostel

i. Number of hostels

ii. Number of inmates

iii. Facilities (mention available facilities)

Working women's hostel

- i. Number of inmates
- ii. Facilities (mention available facilities)

É Residential facilities for teaching and non-teaching staff (give numbers available ô cadre wise)

É Cafeteria ô

É Health centre ó

First aid

Inpatient, Outpatient, Emergency care facility, Ambulance í í . Health centre staff ó

Qualified doctor Full time Part-time

Qualified Nurse Full time Part-time

É Facilities like banking, post office, book shops

É Transport facilities to cater to the needs of students and staff

É Animal house

É Biological waste disposal

É Generator or other facility for management/regulation of electricity and voltage

É Solid waste management facility

É Waste water management

É Water harvesting

12. Details of programmes offered by the college (Give data for current academic year) (2015-16)

SI. No.	Programme Level	Name of the Programme/ Course	Duration	Entry Qualification	Medium of instruction	Sanctioned/ approved Student strength	No. of students admitted
1	Under-Graduate	Bengali(H)	3 years	H.S.	Bengali	90	71
2		English(H)	3 years	H. S.	English	36	29
3		History(H)	3 years	H.S.	Bengali	61	45
4		Education(H)	3 years	H.S.	Bengali	73	79
5		B.A. General	3 years	H.S.	Bengali	300	262

6		B.Com(H)	3 years	H.S.	Bengali	85	42
7		B. Com. General	3 years	H.S.	Bengali	70	04
	Post-Graduate	NIL					
	Integrated Programmes PG	NIL					
	Ph.D.	NIL					
	M.Phil.	NIL					
	Ph.D	NIL					
	Certificate courses	NIL					
	UG Diploma	NIL					
	PG Diploma	NIL					
	Any Other (specify and provide details)	NIL					

13. Does the college offer self-financed Programmes?

Yes No

If yes, how many?

14. New programmes introduced in the college during the last five years if any?

Yes		No	☺	Number	NA
-----	--	----	---	--------	----

15. List the departments: (respond if applicable only and do not list facilities like Library, Physical Education as departments, unless they are also offering academic degree awarding programmes. Similarly, do not list the departments offering common compulsory subjects for all the programmes like English, regional languages etc.)

Faculty	Department	U G	PG	Research
Science	Nil	Nil	Nil	Nil
Arts	Bengali, English, History, Education, Political Science, Philosophy, Physical	Under-graduate	Nil	Nil

	Education.			
Commerce	Accounting Group of Papers	Under-graduate	Nil	Nil
Any other	Nil	Nil	Nil	Nil

16. Number of Programmes offered under (Programme means a degree course like BA, BSc, MA, M.Comí)

- a. annual system
- b. semester system
- c. trimester system

17. Number of Programmes with

- a. Choice Based Credit System
- b. Inter/Multidisciplinary Approach
- c. Any other (specify and provide details)

18. Does the college offer UG and/or PG programmes in Teacher Education?

Yes No

If yes,

a. Year of Introduction of the programme(s) í í í í í í (dd/mm/yyyy)
and number of batches that completed the programme

b. NCTE recognition details (if applicable)

Notification No.: í í í í í í í í í í í í í í í

Date: í í í í í í í í í í í (dd/mm/yyyy)

Validity: í í í í í í í í í ..

c. Is the institution opting for assessment and accreditation of Teacher Education Programme separately?

Yes No

19. Does the college offer UG or PG programme in Physical Education?

Yes No

If yes,

a. Year of Introduction of the programme(s) í í í í í í . (dd/mm/yyyy)
and number of batches that completed the programme

b. NCTE recognition details (if applicable)

Notification No.: í í í í í í í í í í í í í í í

Date: í í í í í í í í í í í (dd/mm/yyyy)

Validity: í í í í í í í í

- c. Is the institution opting for assessment and accreditation of Physical Education Programme separately?

Yes No

20. Number of teaching and non-teaching positions in the Institution

Positions	Teaching faculty						PTTs		Non-teaching staff		Technical staff	
	Principal		Associate Professor		Assistant Professor		M	F	*M	*F	*M	*F
Sanctioned by the UGC / University / State Government <i>Recruited</i>	1	0	2	3	1	3	5	6	4	1	Nil	Nil
<i>Yet to recruit</i>	0	0	0	0	5		0		6		0	
Sanctioned by the Management/ society or other authorized bodies <i>Recruited</i>	0	0	0	0	0	0	Ad Hoc Teachers		*M	*F	0	0
							M	F	2	1		
<i>Yet to recruit</i>	0	0	0	0	0	0	0	0	0	0	0	0

*M-Male *F-Female

21. Qualifications of the teaching staff:

Highest qualification	Professor		Associate Professor		Assistant Professor		Total
	Male	Female	Male	Female	Male	Female	
Permanent teachers							
D.Sc./D.Litt.	Nil	Nil	Nil	Nil	Nil	Nil	0
Ph.D.	Nil	Nil	Nil	1	Nil	Nil	1
M.Phil.	Nil	Nil	Nil	Nil	Nil	Nil	0
PG	Nil	Nil	2	2	1	3	8
Temporary teachers/ Adhoc Teachers							
Ph.D.	Nil	Nil	Nil	Nil	Nil	Nil	Nil
M.Phil.	Nil	Nil	Nil	Nil	Nil	Nil	Nil
PG	Nil	Nil	Nil	Nil	3	2	5
Part-time teachers							
Ph.D.	Nil	Nil	Nil	Nil	Nil	Nil	Nil
M.Phil.	Nil	Nil	Nil	Nil	Nil	Nil	Nil
PG	Nil	Nil	Nil	Nil	5	6	11

22. Number of Visiting Faculty /Guest Faculty engaged with the College.

Nil

23. Furnish the number of the students admitted to the college during the last four academic years.

Categories	Year 1 2011-12		Year 2 2012-13		Year 3 2013-14		Year 4 2014-15	
	Male	Female	Male	Female	Male	Female	Male	Female
SC	88	42	103	51	93	54	95	53
ST	0	0	0	0	0	0	0	0
OBC	48	39	42	32	29	20	21	18
General	284	334	253	379	268	414	271	415
BPL	33	30	25	28	64	61	65	69
Minority	64	63	68	92	86	95	73	114
PH/PC	1	0	1	0	0	0	0	0

24. Details on students enrollment in the college during the current academic year:

Type of students	UG	PG	M. Phil.	Ph.D.	Total
Students from the same state where the college is located	Same State	NA	NA	NA	
Students from other states of India	Nil	NA	NA	NA	Nil
NRI students	Nil	NA	NA	NA	Nil
Foreign students	Nil	NA	NA	NA	Nil
Total					

25. Dropout rate in UG and PG (average of the last two batches)

UG	PG
30%	NA

26. Unit Cost of Education

(Unit cost = total annual recurring expenditure (actual) divided by total number of students enrolled)

(a) including the salary component

Rs. 12363.51

(b) excluding the salary component

Rs.3078.61

27. Does the college offer any programme/s in distance education mode (DEP)?

Yes No

If yes,

a) is it a registered centre for offering distance education programmes of another University

Yes No

b) Name of the University which has granted such registration.

NETAJI SUBHAS OPEN UNIVERSITY

c) Number of programmes offered

d) Programmes carry the recognition of the Distance Education Council.

Yes No

28. Provide Teacher-student ratio for each of the programme/course offered

Faculty	Department	Teacher-Student Ratio	
		Honours	General
Arts	Bengali	1:47.5	1:140
	English	1: 25.5	1:6
	History	1: 24	1: 149
	Education	1: 43	1: 197
	Political Science		1:455
	Philosophy		1: 76
	Physical Education		1: 66
Commerce	Accountancy	1:18	1: 1

29. Is the college applying for

Accreditation : Cycle 1 Cycle 2 Cycle 3 Cycle 4

Re-Assessment:

(Cycle 1 refers to first accreditation and Cycle 2, Cycle 3 and Cycle 4 refers to re- accreditation)

30. Date of accreditation* (applicable for Cycle 2, Cycle 3, Cycle 4 and re-assessment only)

Cycle 1: 31-03-2007 (dd/mm/yyyy) Accreditation Outcome/Result C++.

Cycle 2: í í í í í í (dd/mm/yyyy) Accreditation Outcome/Resultí í

Cycle 3: í í í í í í (dd/mm/yyyy) Accreditation Outcome/Resultí í

*** Kindly enclose copy of accreditation certificate(s) and peer team report(s) as an annexure.**

31. Number of working days during the last academic year.

233

32. Number of teaching days during the last academic year

(Teaching days means days on which lectures were engaged excluding the examination days)

33. Date of establishment of Internal Quality Assurance Cell (IQAC) IQAC
22/11/2010 í í í í í í (dd/mm/yyyy)
34. Details regarding submission of Annual Quality Assurance Reports (AQAR) to NAAC.
- AQAR (i) to be submitted í í í í í í (dd/mm/yyyy)
- AQAR (ii) to be submitted í í í í í í (dd/mm/yyyy)
- AQAR (iii) to be submitted í í í (dd/mm/yyyy)
- AQAR (iv) to be submitted í í í í í í (dd/mm/yyyy)
35. Any other relevant data (not covered above) the college would like to include. (Do not include explanatory/descriptive information)

2. Criteria - wise Inputs

CRITERION I: CURRICULAR ASPECTS

1.1 Curriculum Planning and Implementation

1.1.1 State the vision, mission and objectives of the institution, and describe how these are communicated to the students, teachers, staff and other stakeholders.

Ans.

Vision:

To be one of the best colleges in the district of Howrah through a combination of imparting quality education and promoting a sense of human values among the students.

Mission:

To spread Higher Education in the rural area;

To achieve excellence in education ;

To enable the students of the rural area to obtain the degrees essential for pursuing post graduate degrees and competitive examinations.

To contribute to the over-all development of the rural area by participating in the community activities.

The Vision and the Mission of the College are communicated through the Prospectus which is published annually and also through the Induction meeting with the students of the first year held at the beginning of the session.

1.1.2 How does the institution develop and deploy action plans for effective implementation of the curriculum? Give details of the process and substantiate through specific example(s).

Ans. For the effective implementation of the curriculum, the students and the teachers are sensitized at the beginning of the academic year and meetings are held by the different departments as to how to go about the course taking in feedbacks from all the quarters. The Principal, the members of IQAC and the Teachers along with the student representatives hold discussions about how to achieve the target.

1.1.3 What type of support (procedural and practical) do the teachers receive (from the University and/or institution) for effectively translating the curriculum and improving teaching practices?

Ans. The affiliating University of Calcutta organizes different workshops whenever anything new is introduced in the syllabus and the teachers participate in them to be aware of the needs. The College allows the teachers to attend them and leave is granted to them so that they can participate in them.

1.1.4 Specify the initiatives taken up or contribution made by the institution for effective curriculum delivery and transaction on the Curriculum provided by the affiliating University or other Statutory agency.

Ans. The College requests the teachers to attend the seminars and workshops organized by the affiliating university. The IQAC requests the faculty members make use of the ICT resources available at the College.

1.1.5 How does the institution network and interact with beneficiaries such as industry, research bodies and the university in effective operationalization of the curriculum?

Ans. The College being an under-graduate institution and with affiliation in Arts and Commerce subjects does not have much scope for research activities or interaction with industry. With the parent university, the College interacts both in the traditional and the internet way.

1.1.6 What are the contributions of the institution and/or its staff members to the development of the curriculum by the University?(number of staff members/departments represented on the Board of Studies, student feedback, teacher feedback, stakeholder feedback provided, specific suggestions etc.

Ans. At present, our Principal, Saumitra Sarkar is a member of the Calcutta University Syndicate which is the highest decision making body of the university.

1.1.7 Does the institution develop curriculum for any of the courses offered (other than those under the purview of the affiliating university) by it? If 'yes', give details on the process (Needs Assessment, design, development and planning) and the courses for which the curriculum has been developed.

Ans. The college is an affiliated college and hence there is no scope for curriculum development and it follows the curriculum prepared by the University of Calcutta.

1.1.8 How does institution analyze/ensure that the stated objectives of curriculum are achieved in

the course of implementation?

Ans. The stated objectives of the curriculum are implemented through regular holding of classes and monitoring the progress of the covering of the syllabus by the faculty members from time to time.

1.2 Academic Flexibility

1.2.1 Specifying the goals and objectives give details of the certificate/diploma/ skill development courses etc., offered by the institution.

Ans. The aim of the College is provide quality education to the educationally backward and first generation learners. At present, the College does not offer any certificate or diploma course.

1.2.2 Does the institution offer programmes that facilitate twinning/dual degree? If -yes- give details.

Ans. The College does not offer any twining/ dual degree programmes.

1.2.3 Give details on the various institutional provisions with reference to academic flexibility and how it has been helpful to students in terms of skills development, academic mobility, progression to higher studies and improved potential for employability. Issues may cover the following and beyond:

Range of Core / Elective options offered by the University and those opted by the college :

Honours and General courses are offered and the students can choose their options from the listed subjects. They are as follows:

Sl. No.	Degree	Subjects	Elective Combination (any two)
1	B.A. Honours	Bengali	History, Education, Philosophy
2		English	History, Education
3		History	Political Science, Education, Philosophy
4		Education	Bengali, Political Science
5	B.A. General		(Any three) Bengali, English, Political Science, History, Philosophy, Education or Physical Education
6	B.Com. Honours	Accountancy	Accounting Group of Papers.
7	B. Com. General		

ÉChoice Based Credit System and range of subject options: NA

ÉCourses offered in modular form: NA

ÉCredit transfer and accumulation facility : NA

ÉLateral and vertical mobility within and across programmes and courses: NA

ÉEnrichment courses: NA

1.2.4 Does the institution offer self-financed programmes? If 'yes', list them and indicate how they differ from other programmes, with reference to admission, curriculum, fee structure, teacher qualification, salary etc.

Ans. The College does not offer any self-financing programmes.

1.2.5 Does the college provide additional skill oriented programmes, relevant to regional and global employment markets? If 'yes', provide details of such programme and the beneficiaries.

Ans. The college does not offer any additional skill oriented programmes.

1.2.6 Does the University provide for the flexibility of combining the conventional face-to-face and Distance Mode of Education for students to choose the courses/combinations of their choice? If 'yes', how does the institution take advantage of such provision for the benefit of students?

Ans. The University of Calcutta does not provide any such scope. However, the College runs Distance Mode of Education with a tie-up with Netaji Subhas Open University, Calcutta.

1.3 Curriculum Enrichment

1.3.1 Describe the efforts made by the institution to supplement the University's Curriculum to ensure that the academic programmes and Institution's goals and objectives are integrated?

Ans. The teachers are advised to attend seminars and workshops conducted and organized by the university and the students are encouraged to take part in group discussions, debates etc.

1.3.2 What are the efforts made by the institution to enrich and organize the curriculum to enhance the experiences of the students so as to cope with the needs of the dynamic employment market?

Ans. As of now, the curriculum prepared by the university is good enough to enable a student to compete in such examinations conducted by SSC, West Bengal and a thorough knowledge is absolutely essential to succeed.

1.3.3 Enumerate the efforts made by the institution to integrate the cross cutting issues such as Gender, Climate Change, Environmental Education, Human Rights, ICT etc., into the curriculum?

Ans. Apart from the class-rooms where the teachers in their social roles sensitize the students about these issues, NSS programmes play a vital role. The students are encouraged to make use of the ICT facilities available.

1.3.4 What are the various value-added courses/enrichment programmes offered to ensure holistic development of students?

§ moral and ethical values

§ employable and life skills

§ better career options

§ community orientation

Ans. The College does not run any separate value-added courses but the things like moral and ethical values, life skills, community orientation are taken care of within the syllabus itself.

1.3.5 Citing a few examples enumerate on the extent of use of the feedback from stakeholders in enriching the curriculum?

Ans. The College IQAC receives feedback from the students to perform its role in enriching the curriculum. It receives feedback from the student community as to how to go about it. Any one is welcome to offer suggestions through our website and reach us over the phone.

1.3.6 How does the institution monitor and evaluate the quality of its enrichment programmes?

Ans. The College does not offer any enrichment programme.

1.4 Feedback System

1.4.1 What are the contributions of the institution in the design and development of the curriculum prepared by the University?

Ans. No faculty member of our College is member of any of the board of studies of

University of Calcutta at present.

1.4.2 Is there a formal mechanism to obtain feedback from students and stakeholders on Curriculum? If yes, how is it communicated to the University and made use internally for curriculum enrichment and introducing changes/new programmes?

Ans. Any one can reach out to us through our College website and over the phone. The IQAC receives feedback from the students and the teachers from time in an informal manner.

1.4.3 How many new programmes/courses were introduced by the institution during the last four years? What was the rationale for introducing new courses/programmes?)

Ans. No new programmes were introduced in the last four years. With severe shortage of resources, the College is unable to introduce any new programme.

Any other relevant information regarding curricular aspects which the college would like to include.

CRITERION II: TEACHING - LEARNING AND EVALUATION

2.1 Student Enrollment and Profile

2.1.1 How does the college ensure publicity and transparency in the admission process?

Ans. The College follows the principle of the government of West Bengal in theory and practice. It is mandatory from 2015 to introduce on-line admission process on a stand-alone basis. Our College has successfully implemented the process. We issued information booklets and the detailed procedure for admission was displayed in the College website.

2.1.2 Explain in detail the criteria adopted and process of admission (Ex. (i) merit (ii) common admission test conducted by state agencies and national agencies (iii) combination of merit and entrance test or merit, entrance test and interview (iv) any other) to various programmes of the Institution.

Ans. The College strictly follows the norms laid down by the University of Calcutta in its circular no. CSR/123/10 dt. 19-11-10. The student is required to apply online. The admission is based strictly in order of merit. The merit list is prepared on the basis of marks obtained in the H.S. Examination. The merit list is displayed both in the College notice board and the college website. The College takes special initiative to ensure admission for the willing candidate as it wants every H.S. pass-out of the area to become a graduate.

2.1.3 Give the minimum and maximum percentage of marks for admission at entry level for each of the programmes offered by the college and provide a comparison with other colleges of the affiliating university within the city/district.

Ans. The minimum percentage of marks for admission in Honours Courses is 45% in aggregate or 55% in subject as per the norms of Calcutta University. For General courses, mere pass is necessary in H.S. Examination. For the SC/ST category, the minimum percentage is 40% in aggregate for admission in Honours courses.

2.1.4 Is there a mechanism in the institution to review the admission process and student profiles annually? If yes, what is the outcome of such an effort and how has it contributed to the improvement of the process?

Ans. The merit list is prepared by the computer software and the list is publicly displayed. Any one is free to make an enquiry and his/her application can be personally scrutinized if he /she wants it. A dedicated help desk for admission exists to facilitate the process of admission and this is particularly helpful to the students in the area where Internet services are not easily available and the speed is very slow.

2.1.5 Reflecting on the strategies adopted to increase/improve access for following categories

of students, enumerate on how the admission policy of the institution and its student profiles demonstrate/reflect the National commitment to diversity and inclusion

SC/ST

OBC

Women

Differently abled

Economically weaker sections

Minority community

Any other

Ans. The College adheres to the policy of the University of Calcutta in terms of reservation. There is no reservation for women students or minority though. The student profile indicates that women outnumber men and there is a significant increase in the number of minority students.

Social Profile (2015-16)

	General	SC	OBC	Minority	BPL	Total
B.A.	249	63	14	96	60	482
B.Com	31	2	4	7	02	46
Total	280	65	18	103	62	528

Gender Profile (2015-16)

	Male	Female
B.A.	180	300
B.Com.	39	07
Total	219	307

2.1.6 Provide the following details for various programmes offered by the institution during the last four years and comment on the trends. i.e. reasons for increase / decrease and actions initiated for improvement.

Programmes	No. of Applications	No. of Students Admitted	Demand Ratio (applications : seats)

UG	2011-12	2012-13	2013-14	2014-15	2011-12	2012-13	2013-14	2014-15	2011-12	2012-13	2013-14	2014-15
B.A. Honours												
Bengali	182	173	213	188	66	45	84	74	2:1	2:1	2.4:1	2:1
English	34	32	58	47	13	17	24	19	1:1	0.9:1	1.6:1	1.3:1
History	73	62	89	53	41	37	34	41	1.2:1	1:1	1.5:1	.9:1
Education	58	61	83	92	34	37	28	46	.8:1	.8:1	1.1:1	1.3:1
B.Com. Honours												
Accountancy	38	36	40	37	29	23	29	20	.5:1	.4:1	.5:1	.4:1
General Courses												
B.A.	159	228	231	276	159	228	231	276	1:1	1:1	1:1	1:1
B.Com.	05	10	20	29	05	10	20	29	1:1	1:1	1:1	1:1

N.B: General Course candidates are admitted on First-Come First- Serve Basis.

PG 1 2 3	Nil	Nil	Nil
M.Phil.	Nil	Nil	Nil
Ph.D.	Nil	Nil	Nil
Integrated PG Ph.D.	Nil	Nil	Nil
Value added 1 2 3	Nil	Nil	Nil
Certificate 1 2 3	Nil	Nil	Nil
Diploma 1 2	Nil	Nil	Nil

PG Diploma	Nil	Nil	Nil
1			
2			
3			
Any other	Nil	Nil	Nil
1			
2			
3			

2.2 Catering to Student Diversity

2.2.1 How does the institution cater to the needs of differently-abled students and ensure adherence to government policies in this regard?

Ans. The College is ready to extend all possible help to the differently-abled students. As of now, there is no such student enrolled in the College.

2.2.2 Does the institution assess the students' needs in terms of knowledge and skills before the commencement of the programme? If 'yes', give details on the process.

Ans. No. The quality of the students is assessed in terms of the marks obtained in the H.S. Examination and they are counseled to choose their courses accordingly.

2.2.3 What are the strategies adopted by the institution to bridge the knowledge gap of the enrolled students (Bridge/Remedial/ Add-on/Enrichment Courses, etc.) to enable them to cope with the programme of their choice?

Ans. There are no add-on or enrichment courses available in the College but special classes are arranged and special help is extended to them by the teachers of the various departments.

2.2.4 How does the college sensitize its staff and students on issues such as gender, inclusion, environment etc.?

Ans. This is mainly done through the NSS units which take different initiatives to create awareness about the problems of women and paying attention to the environment. Apart from that we have a Women's Cell called 'SANHATI' to make the girl students aware of the different issues related to them.

2.2.5 How does the institution identify and respond to special educational/learning needs of advanced learners?

Ans. The advanced learners are specially looked after by the teachers of the various

departments. They are given extra help and guidance whenever they need it.

2.2.6 How does the institute collect, analyze and use the data and information on the academic performance (through the programme duration) of the students at risk of drop out (students from the disadvantaged sections of society, physically challenged, slow learners, economically weaker sections etc. who may discontinue their studies if some sort of support is not provided)?

Ans. The teachers appeal to the students not to leave the course of the study in the middle and different kinds of financial help like minority scholarship, kanyashree scheme, SC/ST scholarships are granted by the government so that the students carry on their studies. In fact, the various welfare schemes of the West Bengal government are there to enable the student to carry on his/her studies. Apart from these, the College on its own provides free/half free studentship to the deserving students.

2.3 Teaching-Learning Process

2.3.1 How does the college plan and organize the teaching, learning and evaluation schedules? (Academic calendar, teaching plan, evaluation blue print, etc.)

Ans. The University of Calcutta provides an Academic Calendar for all its affiliated colleges and our College looks to it that everything is completed as per the schedule. The academic calendar is printed in the Prospectus itself and is taken as a guide. A meeting of the teachers is held to implement the plan and the different departments carry on their schedule of work.

2.3.2 How does IQAC contribute to improve the teaching ólearning process?

Ans. The IQAC keeps an eye on the way the plan is carried out and assists whenever anything is necessary by way of advice.

2.3.3 How is learning made more student-centric? Give details on the support structures and systems available for teachers to develop skills like interactive learning, collaborative learning and independent learning among the students?

Ans. The students are encouraged to enjoy their learning in the campus. They are asked to make use of the resources available like computers, photocopying and engage themselves in group discussions.

2.3.4 How does the institution nurture critical thinking, creativity and scientific temper among the students to transform them into life-long learners and innovators?

Ans. The students are encouraged to think independently and be aware of the

developments taking place around the world by making use of the internet which is available at the College.

2.3.5 What are the technologies and facilities available and used by the faculty for effective teaching? Eg: Virtual laboratories, e-learning - resources from National Programme on Technology Enhanced Learning (NPTEL) and National Mission on Education through Information and Communication Technology (NME-ICT), open educational resources, mobile education, etc.

Ans. Technology based teaching certainly makes teaching attractive and the teachers are requested to make use of computers and audio-visual aids in their lecture demonstrations.

2.3.6 How are the students and faculty exposed to advanced level of knowledge and skills (blended learning, expert lectures, seminars, workshops etc.)?

Ans. For the students, different seminars are organized by the NSS where eminent experts come to speak and demonstrate on different issues. For the teachers, they are encouraged to attend seminars, Orientation and Refresher courses and workshops organized by the parent university where the faculty members are exposed to lectures by experts.

2.3.7 Detail (process and the number of students benefitted) on the academic, personal and psycho-social support and guidance services (professional counseling/mentoring/academic advise) provided to students?

Ans. We believe that every teacher should act as friend, philosopher and guide for the students and being situated in a rural background, the teachers and the students live very close to each other. The students can approach the teacher at any moment during the college hours for help.

2.3.8 Provide details of innovative teaching approaches/methods adopted by the faculty during the last four years? What are the efforts made by the institution to encourage the faculty to adopt new and innovative approaches and the impact of such innovative practices on student learning?

Ans. Even with our limited resources, we try our best to impart teaching in the attractive way. ICT resources are added to the College. The faculty members are encouraged to use the audio-visual presentations.

2.3.9 How are library resources used to augment the teaching- learning process?

Ans. The College has improved the state of the library. A new area for the same has

been developed and new books are added to the collection. The library is connected to the internet.

2.3.10 Does the institution face any challenges in completing the curriculum within the planned time frame and calendar? If yes, elaborate on the challenges encountered and the institutional approaches to overcome these.

Ans. Yes. The College suffers from a severe shortage of teachers. In fact, the teachers are over-burdened. With all their difficulties, they try hard to complete their assignments and take extra classes whenever necessary.

2.3.11 How does the institute monitor and evaluate the quality of teaching/ learning?

Ans. Our institution is a relatively small institution and that provides the Principal to keep an eye on everything almost personally. He receives feedback both from the teachers and the students about the progress of the syllabus and the quality of teaching.

2.4 Teacher Quality

2.4.1 Provide the following details and elaborate on the strategies adopted by the college in planning and management (recruitment and retention) of its human resource (qualified and competent teachers) to meet the changing requirements of the curriculum:

Highest Qualification	Professor		Associate Professor		Assistant Professor		Total
	Male	Female	Male	Female	Male	Female	
Permanent Teachers							
D. Sc./D.Litt	Nil		Nil		Nil		Nil
Ph.D.	0	0	0	1	0	1	1
M. Phil.	0	0	0	0	0	0	0
PG	0	0	2	2	1	3	9
Part-time Teachers (Govt. Approved)							
Ph.D.	0	0	0	0	0	0	0
M.Phil.	0	0	0	0	0	0	0
PG	0	0	0	0	5	5	10
Guest Lecturers/ Adhoc Teachers							
Ph.D.	0	0	0	0	0	0	0
M.Phil.	0	0	0	0	0	0	0
PG	0	0	0	0	2	3	

2.4.2 How does the institution cope with the growing demand/ scarcity of qualified senior faculty to teach new programmes/ modern areas (emerging areas) of study being introduced

(Biotechnology, IT, Bioinformatics etc.)? Provide details on the efforts made by the institution in this direction and the outcome during the last three years.

Ans. The permanent teachers of the College are recruited through the College Service Commission, West Bengal. The govt. approved Part-time Teachers were duly appointed as per the rules of recruitment of Govt. of West Bengal. The Adhoc or Guest Lecturers were appointed by putting up Advertisements in the College website.

2.4.3 Providing details on staff development programmes during the last four years elaborate on the strategies adopted by the institution in enhancing the teacher quality.

a) Nomination to staff development programmes

Academic Staff Development Programmes	Number of faculty nominated			
	2011-12	2012-13	2013-14	2014-15
Refresher courses	1	1	Nil	1
HRD programmes	---	----	----	---
Orientation programmes	1	Nil	Nil	Nil
Staff training conducted by the university	---	---	---	---
Staff training conducted by other institutions	---	---	---	---
Summer / winter schools, workshops, etc.	---	---	---	---

b) Faculty Training programmes organized by the institution to empower and enable the use of various tools and technology for improved teaching-learning :

- ✓ Teaching learning methods/approaches
- ✓ Handling new curriculum
- ✓ Content/knowledge management
- ✓ Selection, development and use of enrichment materials
- ✓ Assessment
- ✓ Cross cutting issues
- ✓ Audio Visual Aids/multimedia
- ✓ OERø
- ✓ Teaching learning material development, selection and use

Ans. No such programmes could be arranged as of now.

c) Percentage of faculty

invited as resource persons in Workshops / Seminars / Conferences organized by external professional agencies

participated in external Workshops / Seminars / Conferences recognized by national/ international professional bodies

presented papers in Workshops / Seminars / Conferences conducted or recognized by professional agencies

Ans. The teachers participated in the seminars in the following way:

Faculty	Percentage			
	2011-12	2012-13	2013-14	2014-15
Invited as resource persons in Workshops / Seminars / Conferences organized by external professional agencies	Nil	Nil	Nil	Nil
Participated in external Workshops / Seminars / Conferences recognized by national/ international professional bodies	11	Nil	06	06
Presented papers in Workshops / Seminars / Conferences conducted or recognized by professional agencies	Nil	Nil	Nil	Nil

2.4.4 What policies/systems are in place to recharge teachers? (eg: providing research grants, study leave, support for research and academic publications teaching experience in other national institutions and specialized programmes industrial engagement etc.)

Ans. The IQAC encourages the teachers to participate in the seminars, attend orientation and Refresher Courses and they are provided with all possible help including study leave etc.

2.4.5 Give the number of faculty who received awards / recognition at the state, national and international level for excellence in teaching during the last four years. Enunciate how the institutional culture and environment contributed to such performance/achievement of the faculty.

Ans. We have great pleasure to announce that our beloved Principal, Sri Saumitra Sarkar has been awarded the SIKSHARATNA Award for the year 2015 by the Chief Minister of West Bengal for his outstanding contribution to the development of Higher education in the rural area. This is a morale booster for us as we feel that it is a recognition for us who work in the villages

in the most difficult circumstances.

2.4.6 Has the institution introduced evaluation of teachers by the students and external Peers? If yes, how is the evaluation used for improving the quality of the teaching-learning process?

Ans. The College does not have a formal mechanism for the evaluation of teachers by the students but the students are free to approach the Principal to offer their feedback. As for the external agency, the West Bengal government has a mechanism to monitor the quality of the teachers and they are accordingly placed as per CAS.

2.5 Evaluation Process and Reforms

2.5.1 How does the institution ensure that the stakeholders of the institution especially students and faculty are aware of the evaluation processes?

Ans. At the beginning of each session, the faculty members of the various departments sit together to discuss as to how to go about the course and the students are informed about the academic calendar of the University of Calcutta.

2.5.2 What are the major evaluation reforms of the university that the institution has adopted and what are the reforms initiated by the institution on its own?

Ans. The College is an affiliated institution and hence does not have much scope for initiation of reforms on its own. The College follows the procedures of the University of Calcutta.

2.5.3 How does the institution ensure effective implementation of the evaluation reforms of the university and those initiated by the institution on its own?

Ans. The College follows the guidelines prepared by the University of Calcutta as laid down in the academic calendar of the affiliating university.

2.5.4 Provide details on the formative and summative assessment approaches adopted to measure student achievement. Cite a few examples which have positively impacted the system.

Ans. The College follows the university guidelines.

1. Formative assessment: Mid-term Tests
 2. Summative assessment: Annual Tests and University Examinations, Part-I, Part-II and Part-III
- Sports : Trials are conducted

Selected students are given intensive training

The impact is felt in the university examinations and the different level sports meets held from time to time.

2.5.5 Detail on the significant improvements made in ensuring rigor and transparency in the internal assessment during the last four years and weightages assigned for the overall development of students (weightage for behavioral aspects, independent learning, communication skills etc.

Ans. The university evaluation system does not contain any internal assessment and the students are marked on the basis of their annual examination conducted by the university.

2.5.6 What are the graduate attributes specified by the college/ affiliating university? How does the college ensure the attainment of these by the students?

Ans. For appearing in the university examination, the student has to attend 75% of classes. He is required to have a minimum of 60% attendance to sit for the examination or otherwise he is declared ineligible for the university examination.

2.5.7 What are the mechanisms for redressal of grievances with reference to evaluation both at the college and University level?

Ans. At the College level, the students are shown their answerscripts so that they can see with their own eyes the kind of things they have done. As for the university level, the students are required to fill a review form for revaluation of answerscripts on payment of a certain fee. He can also have a copy of the answerscript if he wants it.

2.6. Student performance and Learning Outcomes

2.6.1 Does the college have clearly stated learning outcomes? If yes, give details on how the students and staff are made aware of these?

Ans. The primary aim of the College is to prepare the students to enable them to sit for the university examinations. Along with it, they are prepared in a manner so that they can succeed in their social life and can contribute to the development of society.

2.6.2 Enumerate on how the institution monitors and communicates the progress and performance of students through the duration of the course/programme? Provide an analysis of the students results/achievements (Programme/course wise for last four years) and explain the differences if any and patterns of achievement across the programmes/courses offered.

Ans. Apart from the annual university examinations which indicate the true progress made by the student, the College conducts Mid-term and annual Test Examinations to monitor the progress of the student throughout the year.

Results of BA/ B.Com Part-III Examination of the last four years:

B.A. Honours					
Subject	year	Appeared	Passed with Honours	Passed General	%
Bengali	2011-12	51	45	06	100%
	2012-13	71	63	07	100%
	2013-14	58	54	03	98%
	2014-15	33	32	01	100%
English	2011-12	21	13	08	100%
	2012-13	12	12		100%
	2013-14	11	05	05	100%
	2014-15	14	13	01	100%
History	2011-12	31	27	3	97%
	2012-13	21	18	02	95%
	2013-14	35	25	05	86%
	2014-15	24	21	03	100%
Education	2011-12	29	29		100%
	2012-13	24	16	06	100%
	2013-14	30	27	03	100%
	2014-15	24	21	03	100%
B.A. General					
	2011-12	192		192	100%
	2012-13	153		153	100%
	2013-14	163		80	49%
	2014-15	272		154	56.6%
B.Com Honours					
	2011-12	31	24	07	100%
	2012-13	22	20	01	95%
	2013-14	29	26	0	90%
	2014-15	23	06	0	26%
B.Com General					
	2011-12	12		12	100%
	2012-13	04		04	100%
	2013-14	07		Nil	Nil
	2014-15	06		05	83%

2.6.3 How are the teaching, learning and assessment strategies of the institution structured to facilitate the achievement of the intended learning outcomes?

Ans. The College adopts a rigorous routine of classes where the student is exposed to quality teaching enabling him to do well in the university examination. The teachers are always

there to help.

2.6.4 What are the measures/initiatives taken up by the institution to enhance the social and economic relevance (student placements, entrepreneurship, innovation and research aptitude developed among students etc.) of the courses offered?

Ans. Frankly speaking, the College imparts teaching in the general courses rather than the job oriented courses. These degrees enable the student to spread the message of education among the rural and educationally backward area and make them eligible for such competitive examinations as SSC/ TET etc.

2.6.5 How does the institution collect and analyze data on student performance and learning outcomes and use it for planning and overcoming barriers of learning?

Ans. The College conducts Mid-Term and annual Test Examinations to monitor the progress of the students and the records are maintained so that the quality of the students can be ascertained.

2.6.6 How does the institution monitor and ensure the achievement of learning outcomes?

Ans. The achievement of learning outcome is ensured through a close watch on the progress of the student and the teacher is always available for consultation during College hours for any clarification of doubt.

2.6.7 Does the institution and individual teachers use assessment/ evaluation outcomes as an indicator for evaluating student performance, achievement of learning objectives and planning? If yes provide details on the process and cite a few examples.

Ans. The College being an affiliated institution accepts the performance of the student in the university examination as the indicator of the student progress.

Any other relevant information regarding Teaching-Learning and Evaluation which the college would like to include.

Ans. Being situated in a rural area has its advantages and disadvantages. The greatest advantage is the cordial relationship between the student and the teacher and the disadvantage is that most of the learners are from the first generation of learners.

CRITERION III: RESEARCH, CONSULTANCY AND EXTENSION

3.1 Promotion of Research

3.1.1 Does the institution have recognized research center/s of the affiliating University or any other agency/organization?

Ans. No.

3.1.2 Does the Institution have a research committee to monitor and address the issues of research? If so, what is its composition? Mention a few recommendations made by the committee for implementation and their impact.

Ans. The College does not have any formal research committee to monitor and address the issues of research.

3.1.3 What are the measures taken by the institution to facilitate smooth progress and implementation of research schemes/ projects?

§ autonomy to the principal investigator

§ timely availability or release of resources

§ adequate infrastructure and human resources

§ time-off, reduced teaching load, special leave etc. to teachers

§ support in terms of technology and information needs

§ facilitate timely auditing and submission of utilization certificate to the funding authorities

§ any other

Ans. Not applicable.

3.1.4 What are the efforts made by the institution in developing scientific temper and research culture and aptitude among students?

Ans. The College is always in favour of the development of scientific temper among

the students and to spread the message of free thinking among the people of the rural area.

3.1.5 Give details of the faculty involvement in active research (Guiding student research, leading Research Projects, engaged in individual/collaborative research activity, etc.

Ans. At present Assistant Professor Mrs. Banani Dolui is pursuing Ph.D. at Viswabharati University, Santiniketan. Her area of interest is Bangali Mahilader Probandhe Bishay Boichitra: Ekti Parjalochona 1860-1932. She has submitted her thesis on 11.12.2015 for evaluation.

3.1.6 Give details of workshops/ training programmes/ sensitization programmes conducted/organized by the institution with focus on capacity building in terms of research and imbibing research culture among the staff and students.

Ans. The College being an affiliated under-graduate institution does not offer much scope for research activities.

3.1.7 Provide details of prioritized research areas and the expertise available with the institution.

Ans. Nil

3.1.8 Enumerate the efforts of the institution in attracting researchers of eminence to visit the campus and interact with teachers and students?

Ans. Nil

3.1.9 What percentage of the faculty has utilized Sabbatical Leave for research activities? How has the provision contributed to improve the quality of research and imbibe research culture on the campus?

Ans. No faculty has applied for Sabbatical leave for research activities. Of course, he or she is always welcome to apply for it if he or she intends it.

3.1.10 Provide details of the initiatives taken up by the institution in creating awareness/advocating/transfer of relative findings of research of the institution and elsewhere to students and community (lab to land)

Ans. Nil.

3.2 Resource Mobilization for Research

3.2.1 What percentage of the total budget is earmarked for research?

Give details of major heads of expenditure, financial allocation and actual utilization.

Ans. Nil.

3.2.2 Is there a provision in the institution to provide seed money to the faculty for research? If so, specify the amount disbursed and the percentage of the faculty that has availed the facility in the last four years?

Ans. No.

3.2.3 What are the financial provisions made available to support student research projects by students?

Ans. Nil.

3.2.4 How does the various departments/units/staff of the institute interact in undertaking inter-disciplinary research? Cite examples of successful endeavors and challenges faced in organizing interdisciplinary research.

Ans. Nil.

3.2.5 How does the institution ensure optimal use of various equipment and research facilities of the institution by its staff and students?

Ans. No such research facility is available at College.

3.2.6 Has the institution received any special grants or finances from the industry or other beneficiary agency for developing research facility? If yes give details.

Ans. No.

3.2.7 Enumerate the support provided to the faculty in securing research funds from various funding agencies, industry and other organizations. Provide details of ongoing and completed projects and grants received during the last four years.

Ans. The College is ready to extend all possible support but no such research is taken up by the faculty members.

Nature of the Project	Duration Year From To	Title of the project	Name of the funding agency	Total Grant		Total grant received till date
				Sanctioned	Received	
Minor projects	Nil	Nil	Nil	Nil	Nil	Nil
Major projects	Nil	Nil	Nil	Nil	Nil	Nil
Interdisciplinary projects	Nil	Nil	Nil	Nil	Nil	Nil
Industry sponsored	Nil	Nil	Nil	Nil	Nil	Nil
Studentsø research projects	Nil	Nil	Nil	Nil	Nil	Nil
Any other (specify)	Nil	Nil	Nil	Nil	Nil	Nil

3.3 Research Facilities

3.3.1 What are the research facilities available to the students and research scholars within the campus?

Ans. The student can make use of the computers and access the internet.

3.3.2 What are the institutional strategies for planning, upgrading and creating infrastructural facilities to meet the needs of researchers especially in the new and emerging areas of research?

Ans. The College is an affiliated under-graduate institution in the general subjects of Arts and Commerce and does have much scope for the emerging areas of research.

3.3.3 Has the institution received any special grants or finances from the industry or other beneficiary agency for developing research facilities?? If ÷yesø, what are the instruments / facilities created during the last four years.

Ans. Nil.

3.3.4 What are the research facilities made available to the students and research scholars outside the campus / other research laboratories?

Ans. Nil.

3.3.5 Provide details on the library/ information resource center or any other facilities available

specifically for the researchers?

Ans. If any researcher wants to use the resources of the College library, he/she is welcome.

3.3.6 What are the collaborative research facilities developed/ created by the research institutes in the college. For ex. Laboratories, library, instruments, computers, new technology etc.

Ans. Nil.

3.4 Research Publications and Awards

3.4.1 Highlight the major research achievements of the staff and students in terms of

Patents obtained and filed (process and product)

Original research contributing to product improvement

Research studies or surveys benefiting the community or improving the services

Research inputs contributing to new initiatives and social development

Ans. Nil.

3.4.2 Does the Institute publish or partner in publication of research journal(s)? If \neq yes \emptyset indicate the composition of the editorial board, publication policies and whether such publication is listed in any international database?

Ans. No.

3.4.3 Give details of publications by the faculty and students:

Publication per faculty

Number of papers published by faculty and students in peer reviewed journals (national / international)

Number of publications listed in International Database (for Eg: Web of Science, Scopus, Humanities International Complete, Dare Database - International Social Sciences Directory, EBSCO host, etc.)

Monographs

Chapter in Books

Books Edited

Books with ISBN/ISSN numbers with details of publishers

Citation Index

SNIP

SJR

Impact factor

h-index

Ans. Publication per faculty

Sl. No.	Faculty	National	International
1.	Dr. Sabita Chakraborty	24	
2.	Aparna Bandyopadhyay	1	
3.	Banani Dolui	3	
4.	Manoj Kumar Singh		1

3.4.4 Provide details (if any) of

research awards received by the faculty

recognition received by the faculty from reputed professional bodies and agencies, nationally and internationally

incentives given to faculty for receiving state, national and international recognitions for research contributions.

Ans. Nil.

3.5 Consultancy

3.5.1 Give details of the systems and strategies for establishing institute-industry interface?

Ans. Not Applicable.

3.5.2 What is the stated policy of the institution to promote consultancy? How is the available expertise advocated and publicized

Ans. Not Applicable.

3.5.3 How does the institution encourage the staff to utilize their expertise and available facilities for consultancy services?

Ans. Not Applicable.

3.5.4 List the broad areas and major consultancy services provided by the institution and the revenue generated during the last four years.

Ans. Not Applicable.

3.5.5 What is the policy of the institution in sharing the income generated through consultancy (staff involved: Institution) and its use for institutional development?

Ans. Not Applicable.

3.6 Extension Activities and Institutional Social Responsibility (ISR)

3.6.1 How does the institution promote institution-neighbourhood- community network and student engagement, contributing to good citizenship, service orientation and holistic development of students?

Ans. The five Units of NSS are the agencies through which the students reach out to the community. They carry out different programmes like cleaning the environment, creating awareness of gender equality, thalassaemia awareness. Participation in the NSS is highly rewarding as it contributes to the community development and enables the student to become better social and human beings.

3.6.2 What is the Institutional mechanism to track students' involvement in various social movements / activities which promote citizenship roles?

Ans. The five units of the NSS constitute the institutional mechanism to track the involvement of the students in various social movements.

3.6.3 How does the institution solicit stakeholder perception on the overall performance and quality of the institution?

Ans. The College receives feedback from the guardians and the local citizens about the overall performance and the quality of the institution. Any one can offer his suggestion to the Principal personally or through the College website.

3.6.4 How does the institution plan and organize its extension and outreach programmes? Providing the budgetary details for last four years, list the major extension and outreach programmes and their impact on the overall development of students.

Ans. The College does not have budgetary provisions of its own for such programmes but

grants are received from time to time from the affiliating university to conduct extension and outreach programmes.

The college has five NSS Units with 500 volunteers, 100 members in each unit under five programme officers:

Sl No.	Programme Officer	Designation	Unit
1	Kashinath Pal	Associate Professor in Commerce	Unit-1
2	Pahari Sankar Das	PTT in Political Science	Unit-2
3	Ashek Rosul	Adhoc Teacher	Unit-3
4	Partha Pratim Patra	PTT in History	Unit-4
5	Saswati Majumder	Assistant Professor in Education	Unit-5

The regular activities of NSS include:

Sl. No.	Name of the Programme	Date
1	National Youth Day	12 th January
2	Netaji Birth Day	23 rd January
3	Republic Day	26 th January
4	International Mother Tongue Day	21 st February
5	World Environment Day	5 th June
6	Plantation Week	Month of July
7	NSS Day	24 th September
8	Cleaning Programme (Campus and Environment)	Thrice a year

Apart from the above-mentioned activities, special camps are organized each year.

Sl. No.	Special Camp	Year
1	At Natungram, Kundalia, Binola, 19.03.12- 25.03-12	2011-12
2	At Khanakul-II, Hooghly 18.03.13-24.03.13	2012-13
3	At Sabgachtala, Amta-II 23.03.14-29.03.14	2013-14
4	At Kundalia and College Campus 25.03.15-31.03.15	2014-15

Budgetary Details of NSS: The College on its own does not have budgetary provision for NSS activities. It is entirely dependant on the grants received from time to time from the University of Calcutta. The following is a summary of the amount spent in the last four years:

Year	NSS Unit	Amount from the University	Programme
------	----------	----------------------------	-----------

2011-12	Unit-I	Rs. 22,500/-	Regular activities
		Rs. 22,500/-	Special Camp
	Unit-II	Rs. 22,500/-	Regular activities
		Rs. 22,500/-	Special Camp
	Unit-III	Rs. 22,500/-	Regular activities
		Rs. 22,500/-	Special Camp
	Unit-IV	Rs. 22,500/-	Regular activities
		Rs. 22,500/-	Special Camp
	Unit-V	Rs. 22,500/-	Regular activities
		Rs. 22,500/-	Special Camp
2012-13	Unit-I	Rs. 22,500/-	Regular activities
		Rs. 22,500/-	Special Camp
	Unit-II	Rs. 22,500/-	Regular activities
		Rs. 22,500/-	Special Camp
	Unit-III	Rs. 22,500/-	Regular activities
		Rs. 22,500/-	Special Camp
	Unit-IV	Rs. 22,500/-	Regular activities
		Rs. 22,500/-	Special Camp
	Unit-V	Rs. 22,500/-	Regular activities
		Rs. 22,500/-	Special Camp
2013-14	Unit-I	Rs. 13,500/-	Regular activities
		Rs. 15,000/-	Special Camp
	Unit-II	Rs. 13,500/-	Regular activities
		Rs. 15,000/-	Special Camp
	Unit-III	Rs. 13,500/-	Regular activities
		Rs. 15,000/-	Special Camp
	Unit-IV	Rs. 13,500/-	Regular activities
		Rs. 15,000/-	Special Camp
	Unit-V	Rs. 13,500/-	Regular activities
		Rs. 15,000/-	Special Camp
2014-15	Unit-I	Rs. 13,500/-	Regular activities
		Rs. 15,000/-	Special Camp
	Unit-II	Rs. 13,500/-	Regular activities
		Rs. 15,000/-	Special Camp
		Rs. 13,500/-	Regular activities

	Unit-III	Rs. 15,000/-	Special Camp
	Unit-IV	Rs. 13,500/-	Regular activities
		Rs. 15,000/-	Special Camp
	Unit-V	Rs. 13,500/-	Regular activities
		Rs. 15,000/-	Special Camp

3.6.5 How does the institution promote the participation of students and faculty in extension activities including participation in NSS, NCC, YRC and other National/ International agencies?

Ans. The institution asks the students to join the NSS and they are given certificates of participation when they complete the course.

3.6.6 Give details on social surveys, research or extension work (if any) undertaken by the college to ensure social justice and empower students from under-privileged and vulnerable sections of society?

Ans. The College NSS units conduct social surveys during the annual camp and such camps are organized at different places in different years.

3.6.7 Reflecting on objectives and expected outcomes of the extension activities organized by the institution, comment on how they complement students' academic learning experience and specify the values and skills inculcated.

Ans. NSS activities provide a great opportunity to develop their sense of social responsibility and develop organizational skill which is not ordinarily contained in the syllabus.

3.6.8 How does the institution ensure the involvement of the community in its reach out activities and contribute to the community development? Detail on the initiatives of the institution that encourage community participation in its activities?

Ans. The NSS units of the College organize certain camps at different places and eminent doctors take part in them and the students and the villagers forge a relationship of mutual respect for each other.

3.6.9 Give details on the constructive relationships forged (if any) with other institutions of the locality for working on various outreach and extension activities.

Ans. The following camps are organized by the NSS:

1. AIDS awareness camp
2. Thalassaemia Screening Test camp
3. Blood Donation camp
4. Health Check-up camp
5. Plantation Programme

6. Cleaning the Environment

7. Relief work during flood

3.6.10 Give details of awards received by the institution for extension activities and/contributions to the social/community development during the last four years.

Ans. The NSS units of the College have received several awards from the University of Calcutta:

Year	Award
2011-12	Best College Award university of Calcutta for NSS activities
2012-13	Best College in the District 10 Award for NSS activities
	Best NSS Special Camping Award
	Best Male Programme Officer award
2013-14	Best Female Programme officer
2014-15	Best Programme Officer West Bengal State NSS Award

3.7 Collaboration

3.7.1 How does the institution collaborate and interact with research laboratories, institutes and industry for research activities. Cite examples and benefits accrued of the initiatives - collaborative research, staff exchange, sharing facilities and equipment, research scholarships etc.

Ans. Nil.

3.7.2 Provide details on the MoUs/collaborative arrangements (if any) with institutions of national importance/other universities/ industries/Corporate (Corporate entities) etc. and how they have contributed to the development of the institution.

Ans. Nil.

3.7.3 Give details (if any) on the industry-institution-community interactions that have contributed to the establishment / creation/up-gradation of academic facilities, student and staff support, infrastructure facilities of the institution viz. laboratories / library/ new technology /placement service.

Ans. Nil.

3.7.4 Highlighting the names of eminent scientists/participants who contributed to the events, provide details of national and international conferences organized by the college during the last four years.

Ans. Nil.

3.7.5 How many of the linkages/collaborations have actually resulted in formal MoUs and agreements ? List out the activities and beneficiaries and cite examples (if any) of the established linkages that enhanced and/or facilitated - :

- a) Curriculum development/enrichment
- b) Internship/ On-the-job training
- c) Summer placement
- d) Faculty exchange and professional development e)
Research
- f) Consultancy
- g) Extension
- h) Publication
- i) Student Placement
- j) Twinning programmes
- k) Introduction of new courses
- l) Student exchange
- m) Any other

Ans. Nil

3.7.6 Detail on the systemic efforts of the institution in planning, establishing and implementing the initiatives of the linkages/ collaborations.

Ans. No such initiative has been taken as yet.

Any other relevant information regarding Research, Consultancy and Extension which the college would like to include.

CRITERION IV: INFRASTRUCTURE AND LEARNING RESOURCES

4.1 Physical Facilities

4.1.1 What is the policy of the Institution for creation and enhancement of infrastructure that facilitate effective teaching and learning?

Ans. The College has been trying its best to create and enhance and provide better infrastructure for effective teaching and learning. The College started in a temporary tin structure but with assistance from UGC, West Bengal Government, MPLAD Scheme more classrooms have been added and better infrastructure has been built.

4.1.2 Detail the facilities available for

a) Curricular and co-curricular activities ó classrooms, technology enabled learning spaces, seminar halls, tutorial spaces, laboratories, botanical garden, Animal house, specialized facilities and equipment for teaching, learning and research etc.

Sl. No.	Particulars	Total Numbers
1	Classrooms	18
2	Audio-visual Room	01
3	Computer Lab (Com.)	01
4	Garden	03
5	Projector	01
6	Digital Camera	01
7	Xerox Machine	03

b) Extra ócurricular activities ó sports, outdoor and indoor games, gymnasium, auditorium, NSS, NCC, cultural activities, Public speaking, communication skillsdevelopment, yoga, health and hygiene etc.

Sl. No.	Particulars	Total numbers
1	Playground	1
2	NSS Units	05

4.1.3 How does the institution plan and ensure that the available infrastructure is in line with its academic growth and is optimally utilized? Give specific examples of the facilities developed/augmented and the amount spent during the last four years (Enclose the

Master Plan of the Institution / campus and indicate the existing physical infrastructure and the future planned expansions if any).

Ans. Master Plan of the campus is enclosed in the Annexure-IV.

4.1.4 How does the institution ensure that the infrastructure facilities meet the requirements of students with physical disabilities?

Ans. At the moment, the College does not have any student with physical disabilities.

4.1.5 Give details on the residential facility and various provisions available within them:

- É Hostel Facility ó Accommodation available
- É Recreational facilities, gymnasium, yoga center, etc.
- É Computer facility including access to internet in hostel
- É Facilities for medical emergencies
- É Library facility in the hostels
- É Internet and Wi-Fi facility
- É Recreational facility-common room with audio-visual equipments
- É Available residential facility for the staff and occupancy
Constant supply of safe drinking water
- É Security

Ans. At present, the College does not have any residential facilities. Two Hostels, one each for the boys and the girls are coming up in the College campus.

4.1.6 What are the provisions made available to students and staff in terms of health care on the campus and off the campus?

Ans. All the students are members of Student Health Home.

4.1.7 Give details of the Common Facilities available on the campus ó spaces for special units like IQAC, Grievance Redressal unit, Women's Cell, Counselling and Career Guidance, Placement Unit, Health Centre, Canteen, recreational spaces for staff and students, safe drinking water facility, auditorium, etc.

Ans. The College has the following common facilities:

Sl. No.	Particulars	Position
1	IQAC	First floor (Ad. Block)
2	Grievance Redressal Cell	First floor(Rescue Centre)
3	Canteen	Ground Floor(Ad. Block)
4	Safe Drinking Facility	Seven Places
5	Women's Cell	First floor(Main building)

4.2 Library as a Learning Resource

4.2.1 Does the library have an Advisory Committee? Specify the composition of such a committee. What significant initiatives have been implemented by the committee to render the library, student/user friendly?

Ans. Yes. The library advisory committee is made of members. With the Principal as ex-officio chairperson, the committee comprises of a library-in- Charge, Heads of the departments, library clerk and one student representative.

The committee comprises of the following members:

1. Principal Saumitra Sarkar (ex-officio)
2. Dr. Sabita Chakraborty, Library-in- Charge
3. Kashinath Pal
4. Kumkum Chatterjee
5. Smritiranjana Pramanik
6. Aparna Bandyopadhyay
7. Saswati Majumder
8. Matiar Rahaman
9. Pahari Sankar Das
10. Sabina Yasmin, Student Representative

4.2.2 Provide details of the following:

Total area of the library (in Sq. Mts.): 155.55 sq. mts.

Total seating capacity: 30

Working hours (on working days, on holidays, before examination days, during examination days, during vacation): 11a.m. to 4-15 p.m. on working days

Layout of the library (individual reading carrels, lounge area for browsing and relaxed reading, IT zone for accessing e-resources): Enclosed in Annexure- V

4.2.3 How does the library ensure purchase and use of current titles, print and e-journals and other reading materials? Specify the amount spent on procuring new books, journals and e-resources during the last four years.

Ans. The library committee receives the list of books from the different departments and allocates funds as per the resources available.

Library holdings	Year -1		Year - 2		Year - 3		Year - 4	
	2011-12		2012-13		2013-14		2014-15	
	Number	Total Cost	Number	Total Cost Rs.	Number	Total Cost Rs.	Number	Total Cost Rs.
Text books	404	80800	2005	307096	380	93885	993	116772
Reference Books								
Journals/ Periodicals	06		06		06		06	
e-resources	Nil		Nil		Nil		Nil	
Any other (specify)								

4.2.4 Provide details on the ICT and other tools deployed to provide maximum access to the library collection?

OPAC: No

Electronic Resource Management package for e-journals: No.

Federated searching tools to search articles in multiple databases: Nil

Library Website: No

In-house/remote access to e-publications: Nil

Library automation: No.

Total number of computers for public access: 02

Total numbers of printers for public access: 01

Internet band width/ speed 2mbps 10 mbps 1 gb (GB)

Institutional Repository: Nil

Content management system for e-learning: Nil

Participation in Resource sharing networks/consortia (like

Inflibnet): Nil

4.2.5 Provide details on the following items:

Average number of walk-ins : 80

Average number of books issued/returned: 70

Ratio of library books to students enrolled: 7.47:1

Average number of books added during last three years: 1126

Average number of login to opac (OPAC): NA

Average number of login to e-resources: Data not available

Average number of e-resources downloaded/printed: Data not available

Number of information literacy trainings organized: Data not available

Details of de-weeding out of books and other materials: The Older Books are kept separately.

4.2.6 Give details of the specialized services provided by the library

Manuscripts: Nil

Reference:

Reprography

ILL (Inter Library Loan Service): Nil

Information deployment and notification (Information Deployment and Notification)

Download

Printing

Reading list/ Bibliography compilation

In-house/remote access to e-resources: Nil

User Orientation and awareness:

Assistance in searching Databases

INFLIBNET/IUC facilities: Nil

4.2.7 Enumerate on the support provided by the Library staff to the students and teachers of the college.

Ans. The students are assisted in

- (a) Books circulation
- (b) Journal circulation
- (c) Text books guide
- (d) Internet access

4.2.8 What are the special facilities offered by the library to the visually/physically challenged persons? Give details.

Ans. At present, the College does not have any physically challenged student enrolled.

4.2.9 Does the library get the feedback from its users? If yes, how is it analyzed and used for improving the library services. (What strategies are deployed by the Library to collect feedback from users? How is the feedback analyzed and used for further improvement of the library services?)

Ans. For any feedback, any one can contact the library-in-Charge or drop his suggestion/complaint in the Suggestion Box available in the library.

4.3 IT Infrastructure

4.3.1 Give details on the computing facility available (hardware and software) at the institution.

É Number of computers with Configuration (provide actual number with exact configuration of each available system)

Ans. 14 hp Computers with Intel Core i3, 2nd generation, 2GB DDR3 RAM, 500 GB SATA Hard Disc

4 Del Computers with the same configuration

É Computer-student ratio: 1:83

É Stand alone facility: 03

É LAN facility: 15

É Wifi facility: Nil

É Licensed software : 1. Windows 7 Professional, 2. COSA software 3. Accounting Software from Topoja Solutions

É Number of nodes/ computers with Internet facility : 10

É Any other

4.3.2 Detail on the computer and internet facility made available to the faculty and students on the campus and off-campus?

Ans. The teachers and the students can make use of the internet facilities whenever they need it in the College.

4.3.3 What are the institutional plans and strategies for deploying and upgrading the IT infrastructure and associated facilities?.

Ans. The College receives grants from UGC for purchasing equipments and they are used mainly for the procurement of computers and installation of internet connections.

4.3.4 Provide details on the provision made in the annual budget for procurement, upgradation, deployment and maintenance of the computers and their accessories in the institution (Year wise for last four years).

Ans. There is no such thing as annual budget but provisions are made for them whenever the need appears and such grants are released for such purposes from the different departments like UGC or government of West Bengal.

Head of expenditure	2011-12	2012-13	2013-14	2014-15
Computers & Server, Printers, UPS etc. Procurement	Rs.1018863	Nil	Rs. 62438	Nil

N.B. The maintenance of computers and accessories were borne under College contingency for the different financial years.

4.3.5 How does the institution facilitate extensive use of ICT resources including development and use of computer-aided teaching/ learning materials by its staff and students?

Ans. The College makes use of computers for office work and also a resource for teaching and learning. The student and the teachers can make use of them.

4.3.6 Elaborate giving suitable examples on how the learning activities and technologies deployed (access to on-line teaching- learning resources, independent learning, ICT enabled classrooms/learning spaces etc.) by the institution place the student at the centre of teaching-learning process and render the role of a facilitator for the teacher.

Ans. The teacher can make use of the computer facilities for preparation of class teaching and the student can access the internet. In addition Information Technology is a part of B.Com.

courses and the students learn to use the computers in the computer lab exclusively for them.

4.3.7 Does the Institution avail of the National Knowledge Network connectivity directly or through the affiliating university? If so, what are the services availed of?

Ans. Such facilities do not exist in the College.

4.4 Maintenance of Campus Facilities

4.4.1 How does the institution ensure optimal allocation and utilization of the available financial resources for maintenance and upkeep of the following facilities (substantiate your statements by providing details of budget allocated during last four years)?

Ans. There is no formal budget as such. But the following is a summary of the funds spent for the procurement, maintenance and upkeep of the following facilities:

		2011-12	2012-13	2013-14	2014-15
a.	Building	Rs. 2180651	Rs. 980195	Rs.720514	Rs. 2435610
b.	Furniture	Rs. 111700	Rs. 193850	Rs. 56480	Rs. 187700
c.	Equipments	Rs. 533000	Rs. 168255	Rs. 59339	Rs. 27030
d.	Computers	Rs. 1051193	00	Rs. 62438	00
e.	Vehicles	Nil	Nil	Nil	nil
f.	Any other	Rs. 32958	Rs. 264151	Rs.245800	Rs. 4606

4.4.2 What are the institutional mechanisms for maintenance and upkeep of the infrastructure, facilities and equipment of the college?

Ans. The maintenance work is done when it is necessary and we have hired the services of external agency Qdel for upkeep and maintenance of our website and online admission.

4.4.3 How and with what frequency does the institute take up calibration and other precision measures for the equipment/ instruments?

Ans. For the Generator we have an AMC with Rajkissen Radhakissen Mitter & Co. and they conduct periodic check-ups. For the computers and printers they are looked after as per requirement.

4.4.4 What are the major steps taken for location, upkeep and maintenance of sensitive equipment (voltage fluctuations, constant supply of water etc.)?

Ans. The College has systematic net work of electricity protected by RCBs and MCBs and the College has a well carried out constant water supply system and supplies purified cool drinking water (Aqua Guard) with storage facilities.

Any other relevant information regarding Infrastructure and Learning Resources which the college would like to include.

CRITERION V: STUDENT SUPPORT AND PROGRESSION

5.1 Student Mentoring and Support

5.1.1 Does the institution publish its updated prospectus/handbook annually? If yes, what is the information provided to students through these documents and how does the institution ensure its commitment and accountability?

Ans. The College publishes its annual Prospectus known as 'Inapani' and it is a sort of handbook containing all relevant informations regarding the different courses, the reservation policy, the number of seats available in a particular subject, the documents required, the university regulations, the code of conduct to be followed by the student etc.

5.1.2 Specify the type, number and amount of institutional scholarships / freships given to the students during the last four years and whether the financial aid was available and disbursed on time?

Ans. The students get different scholarships from the governmental agencies, like kanyashree, SC/ST, Minority scholarship etc. from the West Bengal government.

Year	Scholarships	No. of Students	Amount
2014-15	Kanyashree	174	@25000/-
	SC/ST	131	@3000/-
	Minority	141	1.Rs. 4800/- for below 50% 2.Rs. 5100 for above 50%
2013-14	Kanyashree	31	@ 25000/-
	SC/ST	33	@ 3000/-
	Minority	45	1.Rs. 4800/- for below 50% 2.Rs. 5100 for above 50%
2012-13			
	SC/ST	105	@3000/-
	Minority	62	1.Rs. 4800/- for below 50%

			2.Rs. 5100 for above 50%
2011-12	SC/ST	65	@3000/-
	Minority	23	1.Rs. 4800/- for below 50% 2.Rs. 5100 for above 50%

Apart from that, the College on its own allows free and half free studentship to its students.

Year	2011-12	2012-13	2013-14	2014-15
Full Free	12	20	13	12
Half Free	34	62	56	64

5.1.3 What percentage of students receive financial assistance from state government, central government and other national agencies?

Ans. Approximately 30% % of the students receive financial assistance from the government of West Bengal

5.1.4 What are the specific support services/facilities available for

- ✓ Students from SC/ST, OBC and economically weaker sections
- ✓ Students with physical disabilities
- ✓ Overseas students
- ✓ Students to participate in various competitions/National and International
- ✓ Medical assistance to students: health centre, health insurance etc.
- ✓ Organizing coaching classes for competitive exams
- ✓ Skill development (spoken English, computer literacy, etc..)
- ✓ Support for slow learners
- ✓ Exposures of students to other institution of higher learning/ corporate/business house etc.

✓ Publication of student magazines

SC/ST/OBC

- a. Seats for SC/ST students are reserved as per the provisions of West Bengal Government.
- b. SC/ST students get financial help from the state government.

Physical Disabilities:

There is no student with physical disabilities at present but the college will extend all possible help by way of reservation and financial help.

Overseas Students:

No overseas student is enrolled at present.

Competitions:

The student is encouraged to participate and special training is given. So far only Subhankar Ghosh has been able to qualify for the national games and he was placed 1st in the 5000mts.

Medical Assistance:

All students are members of Student Health Home.

Coaching Classes:

At present there is no provision for such programme but our proposal to start coaching classes for competitive examinations has been approved and funds are sanctioned. Work is likely to start shortly.

Skill Development:

As said earlier, we are going to start construction work for the same soon.

Slow learners:

The slow learners are specially taken care of by the teachers.

Exposure to corporate World etc.:

Such facilities do not exist now.

Student Magazine:

Student magazine, SABUJER ABHIJAN is published every two years. Besides, wall magazine, SHAMPAAN is put up by the students of Bengali department.

5.1.5 Describe the efforts made by the institution to facilitate entrepreneurial skills, among the students and the impact of the efforts.

Ans. There is no such initiative in the institution now.

5.1.6 Enumerate the policies and strategies of the institution which promote participation of students in extracurricular and co-curricular activities such as sports, games, Quiz competitions, debate and discussions, cultural activities etc.

additional academic support, flexibility in examinations
special dietary requirements, sports uniform and materials

any other

Ans. The College encourages the students to participate in the different competitions, games and sports held round the year.

1. Certificates are presented and the winners are felicitated in the annual social function.
2. Uniforms and sports kit are provided to the student teams.

5.1.7 Enumerating on the support and guidance provided to the students in preparing for the competitive exams, give details on the number of students appeared and qualified in various competitive exams such as UGC-CSIR- NET, UGC-NET, SLET, ATE / CAT / GRE / TOFEL / GMAT / Central / State services, Defense, Civil Services, etc.

Ans There is no provision for preparing for the competitive examinations in the College.

5.1.8 What type of counselling services are made available to the students (academic, personal, career, psycho-social etc.)

Ans. The students feel free to ask for any kind of possible guidance, be it academic, personal, career or psychological. The teachers are always at hand to extend their support to them.

5.1.9 Does the institution have a structured mechanism for career guidance and placement of its students? If yes, detail on the services provided to help students identify job opportunities and prepare themselves for interview and the percentage of students selected during campus interviews by different employers (list the employers and the programmes).

Ans. No. The College does not any such mechanism.

5.1.10 Does the institution have a student grievance redressal cell? If yes, list (if any) the grievances reported and redressed during the last four years.

Ans. Yes. Our institution is a relatively small one in terms of size and that gives us greater opportunity to remain in close contact with ground realities and we take action immediately to settle the issues so that the grievance is redressed.

5.1.11 What are the institutional provisions for resolving issues pertaining to sexual harassment?

Ans. We have a zero tolerance policy towards sexual harassment. We are happy to announce that till date no such incident has taken place in our College.

5.1.12 Is there an anti-ragging committee? How many instances (if any) have been reported during the last four years and what action has been taken on these?

Ans. No. There is no formal anti-ragging committee but the institution as a whole follows

that no ragging will be tolerated. Till now no instance of ragging has taken place or any such complaint has been received.

5.1.13 Enumerate the welfare schemes made available to students by the institution.

Ans.

1. The poor and the needy students are provided full free and half free studentship and the needy students are exempted from paying the university examination fees which is borne by the college.
2. Separate common rooms for boys and girls
3. Ladies and gents toilets
4. Drinking water (Aqua Guard facilities)
5. Playground
6. Cycle Stand

5.1.14 Does the institution have a registered Alumni Association? If yes, what are its activities and major contributions for institutional, academic and infrastructure development?

Ans. The College has a functioning Alumni Association which is yet to be registered. But the ex-students help in many ways giving their feed back.

5.2 Student Progression

5.2.1 Providing the percentage of students progressing to higher education or employment (for the last four batches) highlight the trends observed.

Student progression	%
UG to PG	NA
PG to M.Phil.	NA
PG to Ph.D.	NA
Employed É Campus selection É Other than campus recruitment	Nil

5.2.2 Provide details of the programme wise pass percentage and completion rate for the last four years (cohort wise/batch wise as stipulated by the university)? Furnish programme-wise details in comparison with that of the previous performance of the same institution and that of the Colleges of the affiliating university within the city/district.

Sl. No.	Course	2011-12	2012-13	2013-14	2014-15
1	Bengali (H)	100%	100%	98%	100%
2	English(H)	100%	100%	100%	100%
3	History (H)	97%	95%	86%	100%

4	Education(H)	100%	100%	100%	100%
5	B.A. (General)	100%	100%	49%	Not published
6	B.Com(H)	100%	95%	90%	26%
7	B.Com. (General)	100%	100%	Nil	83%

5.2.3 How does the institution facilitate student progression to higher level of education and/or towards employment?

Ans. The students get selected to the parent university on the basis of marks obtained in the Part-III Examination. Some students get enrolled in the Post-graduate colleges. Remaining students enroll themselves for the PG courses through Distance Education programmes. The College functions as an Admission centre for Netaji Subhas Open University.

5.2.4 Enumerate the special support provided to students who are at risk of failure and drop out?

Ans. The aim of the College is to bring all H.S. pass-outs of the area to the arena of college education and all kinds of help such as financial, psychological, counseling are provided to prevent drop-out.

5.3 Student Participation and Activities

5.3.1 List the range of sports, games, cultural and other extracurricular activities available to students. Provide details of participation and program calendar.

Ans. The Students' Union organizes **Freshers' Welcome** for the newcomers to the College. They also organize the annual **College Social function**. Each year the students participate in the inter university sports meet held at Ramakrishna Mission Vidyamandir, Belur and the different sports meets organized by Joypur Police Station, Amta-II. Annual sports meet is held in the College ground itself.

5.3.2 Furnish the details of major student achievements in co- curricular, extracurricular and cultural activities at different levels: University / State / Zonal / National / International, etc. for the previous four years.

Ans. The students participate in the different competitions in games and sports organized at different level. The success story in the inter university competitions is presented below:

Year	Name	Events	Level			Position
			University	State	National	
2011-12	Prasanta Barui	200m.	ç			1st
	Sk.Saddik Hossain	100m.	ç			1st
	Subhankar Ghosh	1500m.	ç	ç		1st
	Subhankar Ghosh	800m.	ç	ç		1st
	Subhankar Ghosh	400m.	ç			1st
	Subhankar Ghosh	3000m.	ç			1st
	Subhankar Ghosh	5000m.			ç	1st
	2011-12	Palash Adak	Long Jump	ç		
Mantu Malik		Shot Put	ç			1 st
Suniti Mondal		1500m.	ç			1 st
		800m.	ç			1 st
		400m.	ç			1st
Jasminara Khatun		Discuss	ç			2nd
Rajen Mondal	Discuss	ç			3rd	
2012-13	Subhankar Ghosh	1500m.	ç	ç		1st
		800m.	ç	ç		1st
		400m.	ç			1st
		3000m.	ç			1 st
		5000m.			ç	1 st
	Palash Adak	Long Jump	ç			1 st
	Soma Samanta	100m.	ç			1 st
		200m.	ç			1 st
		400m.	ç			1 st
	Champa Khatun	200m	ç			2 nd
	Saneiya Khatun	Long Jump	ç			2 nd
	Chabu Khatun	Discuss	ç			2 nd
		shotput	ç			3 rd
Madhumita Sana	1500m.	ç			3rd	
Subhankar Ghosh	1500m.	ç	ç		1st	
	800m.	ç	ç		1st	

2013-14		400m.	ç			1 st
	Sailendranath Santra	100m.	ç			1 st
		200m.	ç			1 st
	Soma Samanta	100m.				1 st
		200m.				1 st
	Saneiya Yesmin	100m.	ç			2 nd
		200m.	ç			2 nd
	Madhumita Sana	1500m.	ç			3 rd
2014-15	Sailendranath Santra	100m.	ç			1 st
		200m.	ç			1 st
	Md. Mohasin	Shotput	ç			3 rd
	Pintu Ghorui	1500m.	ç			3 rd
	Bipasa Dey	100m.	ç			3 rd
		200m.	ç			3 rd

5.3.3 How does the college seek and use data and feedback from its graduates and employers, to improve the performance and quality of the institutional provisions?.

Ans. Any one can reach us through our website: www.joypurproycollege.in and email: joypurcollege@yahoo.in.

5.3.4 How does the college involve and encourage students to publish materials like catalogues, wall magazines, college magazine, and other material? List the publications/ materials brought out by the students during the previous four academic sessions.

Ans. The Studentsø Union publishes its magazine, SABUJER ABHIJAN which contains the individual articles, poems, creative writing etc. once in two years. Apart from that, the students publish the wall magazine -Shampaanø from time to time.

5.3.5 Does the college have a Student Council or any similar body? Give details on its selection, constitution, activities and funding.

Ans. The College has Studentsø Union which is democratically elected each year. There is a written constitution which clearly lays down the procedure of election, the number of student representatives, 40% reservation for the girl students in representation and the duties and responsibilities of the student representatives. The General Secretary of the studentsø Union is the student representative to the Governing Body of the College.

A union fee of Rs.125 is charged from the students taking admission and the same is collected by the college office. The Studentsø Union is mainly responsible for keeping a peaceful atmosphere in the College, looking after and solving the various problems faced by the students. Each year, they organize the annual sports, the cultural programmes like Freshersø Welcome, College Social, Saraswati Puja, Iftehar party etc.

5.3.6 Give details of various academic and administrative bodies that have student representatives on them.

Ans. The General Secretary of the Studentsø Union is the student representative to the Governing Body of the College which is the highest decision making body. The student representative is also a member of the IQAC and Library committee.

5.3.7 How does the institution network and collaborate with the Alumni and former faculty of the Institution.

Ans. The College has an Alumni Association but it is not registered. Out past students help us in many ways to take forward the mission of the College.

Any other relevant information regarding Student Support and Progression which the college would like to include.

CRITERION VI: GOVERNANCE, LEADERSHIP AND MANAGEMENT

6.1 Institutional Vision and Leadership

6.1.1 State the vision and mission of the Institution and enumerate on how the mission statement defines the institution's distinctive characteristics in terms of addressing the needs of the society, the students it seeks to serve, institution's traditions and value orientations, vision for the future, etc.?

Ans.

Vision:

To be one of the best colleges in the district of Howrah through a combination of imparting quality education and promoting a sense of human values among the students.

Mission:

To spread Higher Education in the rural area;

To achieve excellence in education ;

To enable the students of the rural area to obtain the degrees essential for pursuing post graduate degrees and competitive examinations.

To contribute to the over-all development of the rural area by participating in the community activities.

The geographical location of the College in a rural area, that too, the delta region of the rivers of Mundeswari and Damodar, places a heavy responsibility on us to face the challenge of promoting Higher Education among the first generation of learners and we have our goal fixed in that direction as we have maintained our aim during the last twenty eight years of existence to stand by the students coming from the agricultural community.

6.1.2 What is the role of top management, Principal and Faculty in design and implementation of its quality policy and plans?

Ans. At Joypur Panchanan Roy College, we work together as a unit as members of one grand family under the leadership of our Principal. The Governing Body, the Principal, the various committees, the Students' Union all sit together with one single aim, that is, to be meaningful as an institution of higher learning in a rural area in an atmosphere of peace and harmony.

6.1.3 What is the involvement of the leadership in ensuring :

É the policy statements and action plans for fulfillment of the stated mission

Ans. The Principal takes the lead role in the policy statements and action plans for fulfillment

of the stated mission as he is the unifying force bringing together all the committees to follow and implement the schemes. All the committees perform under his patronage and supervision.

ÉFormulation of action plans for all operations and incorporation of the same into the institutional strategic plan

Ans. The different committees put forward their plans and opinions to the Principal and all these ideas are then placed before the Governing Body so that they can be implemented properly.

ÉInteraction with stakeholders

Ans. The interaction with the stakeholders, who are mainly the students, is taken up by the Principal and before taking any decision, he consults with the committees and the Governing Body members.

ÉProper support for policy and planning through need analysis, research inputs and consultations with the stakeholders

Ans. The Principal takes feedback from the teachers, students, the local people and then after consultation with Governing Body members and the Bursar takes decisions regarding financial matters.

ÉReinforcing the culture of excellence

Ans. In search of excellence, our College tries to complete the university curriculum within the stipulated period. Special classes are arranged, if necessary. To make teaching interesting audio-visual medium is utilized.

ÉChampion organizational change

Ans. The College as a rural institution has undergone and is undergoing change both at the level of physical facilities and organizational set-up. Promotion of high social values and inculcating a sense of social responsibility among the students are major steps towards it.

6.1.4 What are the procedures adopted by the institution to monitor and evaluate policies and plans of the institution for effective implementation and improvement from time to time?

Ans. The Governing Body sits from time to time to discuss the progress and the future plans of development in infrastructure. The IQAC sits with the teachers and the different committees to look after the policies and plans and implementation of them.

6.1.5 Give details of the academic leadership provided to the faculty by the top management?

Ans. The teachers are given the freedom to pursue their mode of teaching so that they can cover the entire course work in their own ways. They suggest the list of books to be purchased and the management ensures that they work with enthusiasm towards over-all development of the College.

6.1.6 How does the college groom leadership at various levels?

Ans. The College believes in the idea of decentralization and the different committees like IQAC, Teachers Council are empowered to take decisions and approach the Governing Body for approval. Perhaps the finest area to groom student leadership is the functioning of the Students Union.

6.1.7 How does the college delegate authority and provide operational autonomy to the departments / units of the institution and work towards decentralized governance system?

Ans. The different departments enjoy autonomy in their functioning and the students are allowed to choose their field work projects as per their own choices in the subjects of Education and Commerce under the guidance by their teachers. The other committees too enjoy the same freedom in their respective fields.

6.1.8 Does the college promote a culture of participative management? If yes, indicate the levels of participative management.

Ans. The College is not a one man institution, rather it promotes a culture of participative management. Each committee takes members from all sections available.

For example, the Governing Body, the highest decision making Body, is made up of the following members:

1. President
2. Secretary (ex-officio) Principal
3. Two Donor members
4. Four Teacher Representatives
5. Two non-Teaching Representatives
6. Two Government Nominees
7. Two University Nominees
8. Sabhapati, Panchayet Samiti
9. General secretary, Students Union

Similarly the IQAC is made of the following members:

1. Principal (ex-officio) Chairman
2. Coordinator
3. Heads of the Departments (7)
4. Sabhapati Panchayet samiti
5. General secretary Students union
6. Cashier

The library Committee, too, is made up of the following members:

1. Principal (ex-officio) Chairman
2. The Library-in-Charge
3. Heads of the Departments (7)
4. Library Clerk
5. Students' Union Representative
6. Cashier

Thus the College ensures participation from all sections of the stakeholders so that each opinion is heard of and gets importance.

6.2 Strategy Development and Deployment

6.2.1 Does the Institution have a formally stated quality policy? How is it developed, driven, deployed and reviewed?

Ans. The Governing Body of the College has a formally stated quality policy towards achieving excellence in education and to make optimum use of the facilities for better performance. The policy is drafted by the Governing Body and it is the prerogative of the different committees to implement them.

6.2.2 Does the Institute have a perspective plan for development? If so, give the aspects considered for inclusion in the plan.

Ans. The College has perspective plan for future development keeping in mind the following points:

1. Rural background with first generation learners
2. Need to build adequate infrastructure
3. Modernization and need based programmes
4. Promotion of social responsibility

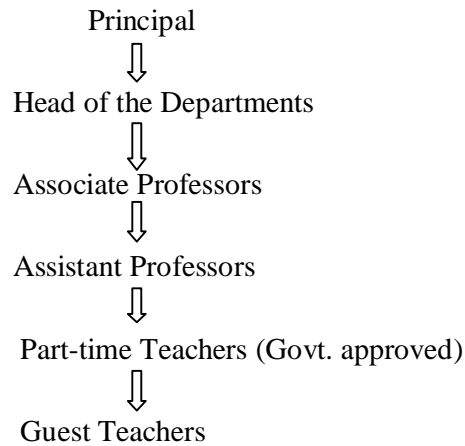
Keeping in mind our modest resources, the College wants to:

1. Introduce new courses
2. Develop more ICT enabled teaching aids
3. Provide more financial help to the students
4. Provide Hostel accommodation to the boys and the girls
5. Purchase more books for the library
6. Computerization of the library

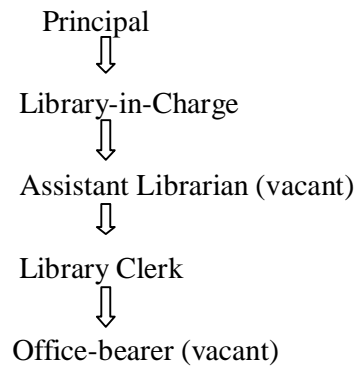
6.2.3 Describe the internal organizational structure and decision making processes.

Ans. The internal organizational structure of the College can be divided into following three sections:

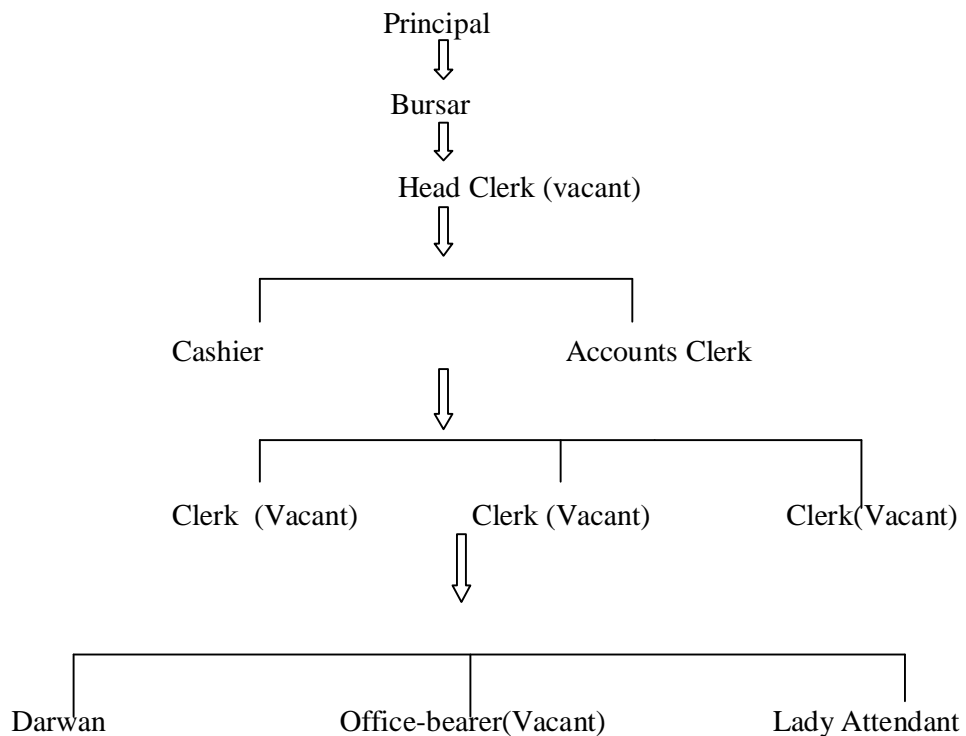
1. Academic



2. Library



3. Office :



6.2.4 Give a broad description of the quality improvement strategies of the institution for each of the following

É Teaching & Learning

Ans. The strategies are

1. To make teaching and learning student friendly
2. To make teaching attractive by use of ICT
3. To make learning student centric
4. To make them better human beings

É Research & Development

1. To encourage the faculty to take up research projects
2. To develop better infrastructure

É Community engagement

1. To make NSS units more active
2. To create more social awareness
3. To sensitize about the current trends like gender equality
4. To conduct more health camps

É Human resource management

1. To improve the quality of the faculty and staff by allowing them to participate in workshops and seminars
2. To hire the services of Guest teachers
3. To retain the retired office staff to run the daily affairs of the college
4. To engage temporary office-bearers

É Industry interaction

1. Such scope is limited for a College like that of ours.

6.2.5 How does the Head of the institution ensure that adequate information (from feedback and personal contacts etc.) is available for the top management and the stakeholders, to review the activities of the institution?

Ans. The Principal of the College receives feedback from the students, teachers and the people in general about the functioning of the College and takes effective measures towards betterment of the institution.

6.2.6 How does the management encourage and support involvement of the staff in improving the effectiveness and efficiency of the institutional processes?

Ans. The management encourages the non-teaching staff to attend different workshops and develop ICT skills for effective work.

6.2.7 Enumerate the resolutions made by the Management Council in the last year and the status of implementation of such resolutions.

Ans. During the last academic year (2014-15), Governing Body meetings were held and the following is summary of the resolutions adopted and the implementation of such resolutions:

Date of meeting	Resolutions Adopted	Implementation Status
08-04-2014	<ol style="list-style-type: none"> 1.To build a Flood Rescue Centre 2. StudentsøUnion election 3. Retirement of Samir Ranjan Chakladar 	<ol style="list-style-type: none"> 1.Nearing completion 2. Completed 3. Dues cleared
09-08-2014	<ol style="list-style-type: none"> 1. Filling of vacant teaching and non-Teaching posts 2. Construction of Girlsø common room & Darwanø quarter 3. Audited accounts 	<ol style="list-style-type: none"> 1. Appropriate authority approached 2. Completed 3. Placed and passed
29-11-2014	<ol style="list-style-type: none"> 1. Proposal for construction of sports complex and minority hostel 2. Construction of administrative building from college fund 	<ol style="list-style-type: none"> 1. Construction started by the PWD social sector 2. Completed
21-02-2015	<ol style="list-style-type: none"> 1. Approval of appointment of Assistant Professor 1. Requisition for Teaching staff 2. Renovation and upkeep of studentsøUnion room 	<ol style="list-style-type: none"> 1. Approved 2.Submitted to CSC 3. Completed

6.2.8 Does the affiliating university make a provision for according the status of autonomy to an affiliated institution? If yes, what are the efforts made by the institution in obtaining autonomy?

Ans. Yes. But the College has not adopted any such resolution.

6.2.9 How does the Institution ensure that grievances / complaints are promptly attended to and resolved effectively? Is there a mechanism to analyze the nature of grievances for promoting better stakeholder relationship?

Ans. The College has a Grievance Redressal cell. Any grievance will be addressed immediately. At the same time, the College being a relatively small institution, such problems, if any, are settled immediately being looked after the Principal himself.

6.2.10 During the last four years, had there been any instances of court cases filed by and against the institute? Provide details on the issues and decisions of the courts on these?

Ans. During the last four years, there has been no instance of court case filed against the institute.

6.2.11 Does the Institution have a mechanism for analyzing student feedback on institutional performance? If yes, what was the outcome and response of the institution to such an effort?

Ans. The College can receive feedback from the students through our website and email address. But the student has great opportunities to offer feedback as the student representatives are members of the Governing Body and the different committees.

6.3 Faculty Empowerment Strategies

6.3.1 What are the efforts made by the institution to enhance the professional development of its teaching and non teaching staff?

Ans. The teachers are encouraged to attend Orientation and Refresher courses and granted leave for that purpose. They are asked to attend seminars and given necessary leave. The non-Teaching staff has undergone training for COSA implementation and the salary is transferred directly to the banks accounts of the employee. To promote healthy and co-operative environment, the Principal, the teachers, the non-teaching staff and the students jointly try to execute the work.

6.3.2 What are the strategies adopted by the institution for faculty empowerment through training, retraining and motivating the employees for the roles and responsibility they perform?

Ans. The strategies are:

1. Provide better infrastructure
2. To make the library meaningful and useful
3. To develop competence to make use of computers
4. To maintain a cordial atmosphere

6.3.3 Provide details on the performance appraisal system of the staff to evaluate and ensure that information on multiple activities is appropriately captured and considered for better appraisal.

Ans. Due to shortage of staff and infrastructure, the College does not have separate formal performance appraisal system. This is entirely looked after by the Principal himself, and after careful consideration of the appraisal of the concerned, due recommendation is made to the DPI, Government West Bengal for promotion/placement related activities.

6.3.4 What is the outcome of the review of the performance appraisal reports by the management and the major decisions taken? How are they communicated to the appropriate stakeholders?

Ans. The self performance appraisal reports of the teachers are placed before the Expert committees constituted by the government and the decisions are communicated to the stakeholders accordingly.

6.3.5 What are the welfare schemes available for teaching and non teaching staff? What percentage of staff have availed the benefit of such schemes in the last four years?

Ans. The schemes are as follows:

1. Each employee has opted for the Provident Fund scheme
2. Loan can be from the Provident Fund
3. Festival advance is provided
4. Bonus is given to the eligible

All applicants for Provident Fund loan have been granted.

Festival advance has been paid to all the applicants.

6.3.6 What are the measures taken by the Institution for attracting and retaining eminent faculty?

Ans. There is no such formal mechanism in the College as of now.

6.4 Financial Management and Resource Mobilization

6.4.1 What is the institutional mechanism to monitor effective and efficient use of available financial resources?

Ans. The College has a very tight vigil on the income and expenditure through the Bursar. The available financial resources are used according to the needs and the work orders are issued only after a comparative statement of the quotations are made. There is provision of Audit being conducted by the external agency engaged by the government of West Bengal.

6.4.2 What are the institutional mechanisms for internal and external audit? When was the last audit done and what are the major audit objections? Provide the details on compliance.

Ans. The financial audit is conducted by the Auditor engaged by the West Bengal government and the college has to furnish the Audit reports each year to the DPI&S office. The audit work for the last two financial years is in progress.

6.4.3 What are the major sources of institutional receipts/funding and how is the deficit managed? Provide audited income and expenditure statement of academic and administrative activities of the previous four years and the reserve fund/corpus available with Institutions, if any.

Ans. The major source of institutional receipts and funding has been the grant-in-aid received from the government of West Bengal. Some funds are also received from the UGC towards implementation of the plans. Apart from those, the fees and dues collected from the students form a part of the income of the College. The audit work of the college is currently going on.

6.4.4 Give details on the efforts made by the institution in securing additional funding and the utilization of the same (if any).

Ans. The College approaches every possible source for financial help and in the recent years we have got help from MPLAD Scheme and BEUP.

1. Rs 5 Lakh MPLAD 2012-2013

2. Rs 3.2 Lakh BEUP 2013-2014

6.5 Internal Quality Assurance System (IQAS)

6.5.1 Internal Quality Assurance Cell (IQAC)

a. Has the institution established an Internal Quality Assurance Cell (IQAC)? If yes, what is the institutional policy with regard to quality assurance and how has it contributed in institutionalizing the quality assurance processes?

Ans. Yes. The IQAC was established on 22st November, 2010. The establishment was delayed mainly because of two reasons, seasonal flood and lack of space. But now the IQAC has become fully functional and it looks after the overall development of the College. With the help from all the teachers, the students and above all the Principal, the IQAC is now the major contributor in every field of development.

b. How many decisions of the IQAC have been approved by the management / authorities for implementation and how many of them were actually implemented?

Ans. The IQAC has taken decisions from time to time and they have been placed before the management for approval and they are implemented or are being implemented:

Sl. No.	Decisions by IQAC	Status
1	To improve the condition of the library as a learning source	Implemented
2	To construct a lavatory for the teachers adjacent to the examination hall	Implemented
3	To establish Internet connection at Library, office and commerce computer lab	Implemented
4	To renovate the college office and to move to a new area	Implemented
5	To buy new branded hp computers and printers	Implemented
6	To construct separate Hostels for Boys and Girls	Work in progress
7	To construct a public toilet in the college campus	Work in progress
8	Widening of the approach road to the College	implemented

c. Does the IQAC have external members on its committee? If so, mention any significant contribution made by them.

Ans. No. IQAC does not have any external member.

d. How do students and alumni contribute to the effective functioning of the IQAC?

Ans. The General Secretary of the Students' Union is a member of the IQAC and we believe the development is impossible without the help of the students. For the alumni, we reach out to them for suggestions though they are not members.

e. How does the IQAC communicate and engage staff from different constituents of the institution?

Ans. The IQAC is made up of the Principal as the chairman and comprises of the teachers, non-teaching staff, General Secretary of the Students' Union and thus it is participatory in nature.

6.5.2 Does the institution have an integrated framework for Quality assurance of the academic and administrative activities? If 'yes', give details on its operationalisation.

Ans. The College takes all possible steps within our limited resources for quality assurance.

1. To increase the facilities available and improve the infrastructure
2. To make teaching and learning student friendly and attractive keeping in view the needs of the students
3. To make use of ICT and audio-visual presentation
4. To keep the campus clean and beautiful
5. To encourage the students to take part in games and sports and different competitions
6. To conduct extension activities towards social responsibility through NSS

6.5.3 Does the institution provide training to its staff for effective implementation of the Quality assurance procedures? If 'yes', give details enumerating its impact.

Ans. The IQAC coordinator is deputed to attend the seminars or workshops organized by the University of Calcutta.

6.5.4 Does the institution undertake Academic Audit or other external review of the academic provisions? If 'yes', how are the outcomes used to improve the institutional activities?

Ans. No. The College at present has not undertaken academic audit by any external agency.

6.5.5 How are the internal quality assurance mechanisms aligned with the requirements of the relevant external quality assurance agencies/regulatory authorities?

Ans. The College abides by all the rules and regulations laid down by the University of Calcutta and follows the instructions issued by the DPI, government of West Bengal. In fact the main task of the Governing Body is to ensure that all such regulations are strictly followed.

6.5.6 What institutional mechanisms are in place to continuously review the teaching learning process? Give details of its structure, methodologies of operations and outcome?

Ans. The students are provided the academic calendar of the university printed in the Prospectus and the detailed syllabi is given to the student each year and they are informed about the procedure to be followed in the classes. The Principal takes note of the progress in consultation with the teachers and the students.

6.5.7 How does the institution communicate its quality assurance policies, mechanisms and outcomes to the various internal and external stakeholders?

Ans. The College clearly states its quality assurance policies in the annual Prospectus and through notification in its website. The principal sits with the teachers and the student representatives about the need for maintenance of quality in education.

Any other relevant information regarding Governance Leadership and Management which the college would like to include.

CRITERIA VII: INNOVATIONS AND BEST PRACTICES

7.1 Environment Consciousness

7.1.1 Does the Institute conduct a Green Audit of its campus and facilities?

Ans. Though there is no formal mechanism to conduct Green Audit in the College, we look after the trees in the College campus and cultivate seasonal flowers, We try hard to keep our College campus neat and clean and free from pollution.

7.1.2 What are the initiatives taken by the college to make the campus eco-friendly?

Energy conservation

Ans. The College looks to it that no electricity is wasted and the class-rooms are both airy and full of natural light and it reduces unnecessary use of electricity.

Use of renewable energy

Ans. The College intends to install Solar panels on the roof top and we have approached the Honourable Minister, West Bengal government for that.

Water harvesting

Check dam construction

Efforts for Carbon neutrality

Plantation

Ans. Each year, the students of the NSS take massive initiative towards plantation of trees in the campus and the College campus looks green and eco-friendly.

Hazardous waste management

e-waste management

7.2 Innovations

7.2.1 Give details of innovations introduced during the last four years which have created a positive impact on the functioning of the college.

Ans. The change is noticeable in all aspects of the College:

Infrastructure: In the last four years we have added five large classrooms which also function as examination halls. We have constructed the Administrative block which houses the Principal's room, the college office, the IQAC room. We have added library room, created space for Reading room for the students and the teachers. New computers have been procured; internet facilities have been established. Xerox machines have been purchased. Audio-visual facilities are available. Two Hostels, one for the boys and another for the girls are being built. A Flood Rescue centre is near completion. The cycle shed is to be newly constructed.

Website: The College website has been developed and any one can reach us at www.joypurproycollege.in and it contains the necessary information about the College.

ICT: To make teaching and learning interesting and attractive, ICT enabled lectures are possible. In the large class-rooms microphone system has been installed.

Office: Office has been shifted to the newly constructed block and has been computerized. This has been a big step as office and accounts works are done through computers.

Academic: The College is trying to introduce new things in the teaching learning process.

1. Audio system has been installed in the big class-rooms
2. Projector has been procured
3. Proposals have been sent to introduce job-oriented courses

7.3 Best Practices

7.3.1 Elaborate on any two best practices **in the given format at page no. 98**, which have contributed to the achievement of the Institutional Objectives and/or contributed to the Quality improvement of the core activities of the college.

Ans. The two of the best practices that are followed in the institution are: 1) Relationship between the College and the community and 2) StudentsøUnion Election

Best Practice: 01

1. Title of the Practice

Relationship between the College and the community

2. Goal

The aim is to foster a sense of belonging among the students that we are social human beings having a responsibility towards the society to which we come from. Such actions on our part create a friendly relationship with the local community and they know that the College is really a part of the welfare for them. Reaching out to the community outside the college campus makes us dear and loveable to the villagers and we, in turn, are loved and respected by them.

3. The Context

We feel that as an institution in an educationally backward and rural area like ours with mainly first generation of learners, we have a responsibility towards society. The students and

teachers try their best to stand by the local community in their needs. This is, of course, not necessary to pass the university examination but develops a student as a better individual. Hence we take part in the community activities, particularly during floods and festivities. Rescue and relief works are taken up, just as get-togethers like -ifteharø party are arranged, emphasizing the fact that we are with the community both in their joy and sorrow. We can share with them just they can share with us.

4. The Practice

Ans. In our constant effort to reach out to the community outside the College campus the teachers and the students particularly through the NSS Units participate in the community development work. This is particularly necessary in the sense that the area is a low lying area and is regularly affected by flood. For days and months, the area remains under flood waters and to stand by the marooned people our students do all they can by way of relief work. In fact the College campus acts as the rescue centre and the disaster management people set up their camps here directing their operations. The students of the College act as volunteers to help them and distribute relief materials. It is a massive job and at the same time the challenge is to save people and organize relief camps and massive resources are necessary. There are areas where the current of the flow of water is very high as there are too many canals and the fear of being carried away is very strong. Perhaps the greatest scarcity during these times is that of pure drinking water, otherwise infectious diseases might spread. Boats become the only mode of transport then to carry the essential commodities.

5. Evidence of Success

Ans. The evidence of success can be judged from the blessings that we receive from the common people for standing by them in their times of need. For our services to the community, we were recognized with the best NSS College Award in 2011 by the University of Calcutta. The honourable District Magistrate of Howrah paid a special visit to our College and promised to build a Flood Rescue Centre within the College campus so that we can serve the community better during these hard times. We can say with pleasure that the building is nearly complete and the same will be fully functional in case such emergency arises. In addition, honourable ADGCP and Director, Civil Defence, West Bengal has paid a visit to the College and has given sanction to set up a QRT centre in our College where the volunteers can stay and reach the distressed people quickly. The work will start shortly.

6. Problems Encountered and Resources Required

Ans. During such times, problems are many but then problems will remain and the need is to

address them and not to run away from them. The members of the Studentsø Union mainly supply the man power and distribution of the relief materials becomes a problem as the number of boats is in short supply. It is not that the relief materials are scarce but they remain locked up at the hands of the government agencies. Medicines are supplied but there is hardly any doctor to help us.

7. Notes (Optional)

The Colleges situated in such an area like that of ours can take the initiative to approach the government of West Bengal so that Flood Rescue Centres and QRT centres can be built for better social work and generating a sense of belonging to the community. We are for the people just as they are for us.

8. Contact Details

Name of the Principal: SAUMITRA SARKAR

Name of the Institution: JOYPUR PANCHANAN ROY COLLEGE

City: AMTA-II, Dist.-Howrah, West Bengal.

Pin Code: 711401

Accredited Status: C++ (1st cycle 2007)

Work Phone : 03214234130

Fax:

Website: www.joypurproycollege.in

E-mail : joypurcollege@yahoo.in

Mobile: 9732749040

Best Practice: 02

1. Title of the Practice:

Studentsø Union Election.

2. Goal :

This practice initiates our students to the democratic political process.

The election also promotes a sense of leadership among them.

3. Context

The statute of the University of Calcutta requires a Student representative in the Governing Body of the College and he has to be the General Secretary of the Studentsø Union. So the Studentsø Union Election is mandatory as per the requirements to form a Statutory Governing Body but this is ,so to say, the root cause of law and order problem in most of the colleges. While most college authorities consider such election process as most unwelcome, we take this as an opportunity to spread the messages of tolerance among the rival political groups with different

views.

4. Practice :

Ans. As per the statutory provisions, the election is held each year generally in the month of January. The Studentsø Union Election is held according to the provisions written in the by-laws of the constitution of the Studentsø Union. The process requires twenty days to complete. First a provisional votersø list is prepared and the same is put on the notice board and a time frame is given to register any objection if there is any. After the dateline is over the final votersø list is published and the same is handed over to the rival student organizations. The candidates file their nominations personally against the seats notified in the election notification and after scrutiny of the same the list of contesting candidates is displayed. A candidate can withdraw his/her name if he wishes and he/she has to come personally always accompanied by the photo Identity Card. On the day of election the voters cast their votes in the designated election booths. They have to produce the photo Identity cards, sign their names, take the ballot paper from the Presiding Officer and cast their vote in secrecy in the voting compartments. After the voting is over, it is counted before the candidates or their authorized representatives. The whole process is as transparent as it can be and secrecy of the vote is maintained strictly.

5. Evidence of Success:

Ans. The College has created an impression on the minds of the people as one of the most democratically run institutions. The most obvious instance of democracy is, we are proud to declare, the atmosphere of calm and peace that remains during the Studentsø Union Election. The students participate spontaneously in one of the most transparent election processes. It is obviously a matter of joy to see that the election which is considered to be poison by many is actually a source of bringing together all on the same platform. The enthusiasm is reflected in the voter turn-out which always crosses 90%. It is a good and healthy practice which other institutions can imitate.

6. Problems Encountered and Resources Required

Ans. The problem existed only at the initial stages when we had to work hard to frame the constitution taking in views from different sections. Now it has fallen into place and the same is carried out smoothly with the help of the local police station. Conducting a Studentsø Union election does not require much money but a will power to stay with the student community and to create an atmosphere that the real beneficiary from the college happens to be the students. The College is for its students and the students are for the community which they come from.

7. Contact Details:

Name of the Principal: SAUMITRA SARKAR

Name of the Institution: JOYPUR PANCHANAN ROY COLLEGE

City: AMTA-II, Dist.-Howrah, West Bengal.

Pin Code: 711401

Accredited Status: C++ (1st cycle 2007)

Work Phone : 03214234130

Fax:

Website: www.joyपुरproycollege.in

E-mail : joyपुरcollege@yahoo.in

Mobile: 9732749040

Evaluative Report of the Departments

Evaluative Report of the Department of Bengali

1. Name of the department: Bengali
2. Year of Establishment: 1986 (General), 2000 (Honours)
3. Names of Programmes / Courses offered (UG, PG, M.Phil., Ph.D., Integrated Masters; Integrated Ph.D., etc.) : UG (Honours & General)
4. Names of Interdisciplinary courses and the departments/units involved: Nil
5. Annual/ semester/choice based credit system (programme wise): Annual
6. Participation of the department in the courses offered by other departments: NA
7. Courses in collaboration with other universities, industries, foreign institutions, etc.: Nil
8. Details of courses/programmes discontinued (if any) with reasons: Nil
9. Number of Teaching posts

	Sanctioned	Filled
Professors	Nil	Nil
Associate Professors	Nil	Nil
Asst. Professors	03	02
Part-time Teachers (Government Approved)	02	02

10. Faculty profile with name, qualification, designation, specialization, (D.Sc./D.Litt. /Ph.D. / M. Phil. etc.,)

Name	Qualification	Designation	Specialization	No. of Years of Experience	No. of Ph.D. Students guided for the last 4 years
------	---------------	-------------	----------------	----------------------------	---

Aparna Bandyopadhyay	M.A., B.Ed.	Assistant Professor	Comparative literature	13	Nil
Banani Dolui	M.A.	Assistant Professor	20 th century's katha sahitya	05	Nil
Jayashree Pramanik	M.A.	Part-time Teacher	Lok sahitya	11	Nil
Srabani Das	M..A.	Part-time Teacher	Katha sahitya	08	Nil

11. List of senior visiting faculty: Nil
12. Percentage of lectures delivered and practical classes handled(programme wise) by temporary faculty: 33%
13. Student -Teacher Ratio (programme wise): Hons. 37.5:1
General 140:1
14. Number of academic support staff (technical) and administrative staff; sanctioned and filled: NA
15. Qualifications of teaching faculty with DSc/ D.Litt/ Ph.D/ MPhil / PG.: PG=4
16. Number of faculty with ongoing projects from a) National b) International funding agencies and grants received: NA
17. Departmental projects funded by DST - FIST; UGC, DBT, ICSSR, etc. and total grants received: NA
18. Research Centre /facility recognized by the University: NA
19. Publications:
 - a) Publication per faculty:

Ans. 1. Aparna Bandyopadhyay: Unish Sataker Nana Vidyachachar Ekti Mukh: Upendra Kishore Roy Choudhury: CU Academic Staff College, May, 2012.

2. Banani Dolui
 - i) Bangla Sahityer Bisisto Charjon Mahila Prbandhik, Sankalpa, ISSN No.2348888.
 - ii) Thakurbarir Meyeder Bijnan Charcha, Rabindra Bhavna, Dec, 2015
 - iii) Bichitro Mukhoshree: Debesh Royer Golper Charitara, Silpa Sahitya, Feb., 2015.

Number of papers published in peer reviewed journals (national / international) by faculty and students

Number of publications listed in International Database (For Eg: Web of Science, Scopus, Humanities International Complete, Dare Database - International Social Sciences Directory, EBSCO host, etc.)

Monographs
 Chapter in Books
 Books Edited
 Books with ISBN/ISSN numbers with details of publishers
 Citation Index
 SNIP
 SJR
 Impact factor
 h-index

20. Areas of consultancy and income generated: Nil
21. Faculty as members in
- a) National committees
 - b) International Committees
 - c) Editorial Boards : Nil
22. Student projects: Nil
- a) Percentage of students who have done in-house projects including inter departmental/programme
 - b) Percentage of students placed for projects in organizations outside the institution i.e.in
 Research laboratories/Industry/ other agencies
23. Awards / Recognitions received by faculty and students: Nil
24. List of eminent academicians and scientists / visitors to the department: Nil
25. Seminars/ Conferences/Workshops organized & the source of funding
- a) National : Nil
 - b) International: Nil
26. Student profile programme/course wise: 2015-2016

Name of the Course/programme (refer question no. 4)	Applications received	Selected	Enrolled		Pass percentage Part-III
			*M	*F	
B.A. (Hons)	317	90	15	56	100%.
B.A.(General)	267	267	87	180	97.5%.

*M = Male *F = Female

27. Diversity of Students

Name of the Course	% of students from the same state	% of students from other States	% of students from abroad
B.A. (Honours)	100%	0%	0%
B.A.(General)	100%	0%	0%

28. How many students have cleared national and state competitive examinations such as NET, SLET, GATE, Civil services, Defense services, etc.? : NA

29. Student progression

Student progression	Against % enrolled
UG to PG	NA
PG to M.Phil.	NA
PG to Ph.D.	NA
Ph.D. to Post-Doctoral	NA
Employed EC Campus selection EO Other than campus recruitment	Nil
Entrepreneurship/Self-employment	NA

30. Details of Infrastructural facilities

a) Library

ç

b) Internet facilities for Staff & Students

ç

c) Class rooms with ICT facility

d) Laboratories

31. Number of students receiving financial assistance from college, university, government or other agencies : Data not available
32. Details on student enrichment programmes (special lectures / workshops / seminar) with external experts: Nil
33. Teaching methods adopted to improve student learning : ICT enabled teaching.
34. Participation in Institutional Social Responsibility (ISR) and Extension activities
Ans. A fairly large number of students participate on ISR and Extension activities through
The various NSS programmes of the College.
35. SWOC analysis of the department and Future plans

Strength: Good relationship between the teachers and the students.
Homely atmosphere.
Personal care by the teachers

Weakness: Students are all from rural background.
They are mostly first generation learners.
Lack of bright students.

Future Plans: To build a Departmental Library.
To add to the number of books available in the College library.
To provide the students with more ICT facilities.

Evaluative Report of the Department of English

1. Name of the department : English
2. Year of Establishment: 1986 (General), 2000(Honours)
3. Names of Programmes / Courses offered (UG, PG, M.Phil., Ph.D., Integrated Masters; Integrated Ph.D., etc.) : UG (Hons & General)
4. Names of Interdisciplinary courses and the departments/units involved: Nil
5. Annual/ semester/choice based credit system (programme wise): Annual
6. Participation of the department in the courses offered by other departments: Nil
7. Courses in collaboration with other universities, industries, foreign institutions, etc.: Nil
8. Details of courses/programmes discontinued (if any) with reasons: Nil
9. Number of Teaching posts

	Sanctioned	Filled
Professors	Nil	Nil
Associate Professors	01	01
Asst. Professors	02	00

10. Faculty profile with name, qualification, designation, specialization, (D.Sc./D.Litt. /Ph.D. / M. Phil. etc.,)

Name	Qualification	Designation	Specialization	No. of Years of Experience	No. of Ph.D. Students guided for the last 4 years
Smritiranjana Pramanik	M.A.	Associate Professor	Language Studies	27	00
Harisadhan Ghosh	M.A., B.Ed.	Adhoc Teacher	American Literature	01	00

11. List of senior visiting faculty: Nil
12. Percentage of lectures delivered and practical classes handled(programme wise) by temporary faculty: 33%
13. Student -Teacher Ratio (programme wise): Hons. 25:1 Gen. 6:1
14. Number of academic support staff (technical) and administrative staff; sanctioned and filled: NA
15. Qualifications of teaching faculty with DSc/ D.Litt/ Ph.D/ MPhil / PG.: PG=2
16. Number of faculty with ongoing projects from a) National b) International funding agencies and grants received: Nil
17. Departmental projects funded by DST - FIST; UGC, DBT, ICSSR, etc. and total grants received: Nil
18. Research Centre /facility recognized by the University: Nil
19. Publications:

a) Publication per faculty : Nil

Number of papers published in peer reviewed journals (national / international) by faculty and students

Number of publications listed in International Database (For Eg: Web of Science, Scopus, Humanities International Complete, Dare Database - International Social Sciences Directory, EBSCO host, etc.)

Monographs

Chapter in Books

Books Edited

Books with ISBN/ISSN numbers with details of publishers

Citation Index

SNIP

SJR

Impact factor

h-index

20. Areas of consultancy and income generated: NA

21. Faculty as members in

a) National committees

b) International Committees

c) Editorial Boards : Nil

22. Student projects: Nil

a) Percentage of students who have done in-house projects including inter departmental/programme

b) Percentage of students placed for projects in organizations outside the institution i.e.in Research laboratories/Industry/ other agencies

23. Awards / Recognitions received by faculty and students: Nil

24. List of eminent academicians and scientists / visitors to the department: Nil

25. Seminars/ Conferences/Workshops organized & the source of funding: Nil

a) National

b) International

26. Student profile programme/course wise: 2015-2016

Name of the Course/programme (refer question no. 4)	Applications received	Selected	Enrolled		Pass percentage Part-III
			*M	*F	
B.A. (Hons)		36	12	17	100%
B.A.(General)	Nil	Nil	Nil	Nil	66.6%

*M = Male *F = Female

27. Diversity of Students

Name of the Course	% of students from the same state	% of students from other States	% of students from abroad
B.A (Honours)	100%	Nil	Nil
B.A. (General)	100%	Nil	Nil

28. How many students have cleared national and state competitive examinations such as NET, SLET, GATE, Civil services, Defense services, etc.?

29. Student progression

Student progression	Against % enrolled
UG to PG	NA
PG to M.Phil.	NA
PG to Ph.D.	NA
Ph.D. to Post-Doctoral	NA
Employed	
É Campus selection	Nil
É Other than campus recruitment	Data Not Available
Entrepreneurship/Self-employment	Nil

30. Details of Infrastructural facilities

a) Library

b) Internet facilities for Staff & Students

c) Class rooms with ICT facility

d) Laboratories: NA

31. Number of students receiving financial assistance from college, university, government or other agencies: Data not available

32. Details on student enrichment programmes (special lectures / workshops / seminar) with external experts: NA

33. Teaching methods adopted to improve student learning: Audio-visual presentation is made to facilitate better understanding and the students are given printed materials to get over the difficulties.

34. Participation in Institutional Social Responsibility (ISR) and Extension activities: The students are members of the Units of College NSS and participate in different programmes.

35. SWOC analysis of the department and Future plans

Strength: Good and friendly relationship between the teachers and the students.

English is particularly valuable in this remote rural and educationally backward area.

Weakness: The students are from the rural area and are not exposed to English education.

The relatively brighter students are joining PTTI courses leaving the Honours course midway.

Future Plans: To establish Departmental library.

To purchase more Reference books for the library.

To make learning more ICT enabled.

Evaluative Report of the Department of History

1. Name of the department: History
2. Year of Establishment: 1986 (General), 2000 (Hons.)
3. Names of Programmes / Courses offered (UG, PG, M.Phil., Ph.D., Integrated Masters; Integrated Ph.D., etc.) : UG (Hons. & General)
4. Names of Interdisciplinary courses and the departments/units involved: Nil
5. Annual/ semester/choice based credit system (programme wise): Annual
6. Participation of the department in the courses offered by other departments: Nil
7. Courses in collaboration with other universities, industries, foreign institutions, etc.: Nil
8. Details of courses/programmes discontinued (if any) with reasons: Nil
9. Number of Teaching posts

	Sanctioned	Filled
Professors	Nil	Nil
Associate Professors	01	01
Asst. Professors	01	00

10. Faculty profile with name, qualification, designation, specialization, (D.Sc./D.Litt. /Ph.D. / M. Phil. etc.,)

Name	Qualification	Designation	Specialization	No. of Years of Experience	No. of Ph.D. Students guided for the last 4 years
Kumkum Chatterjee	M.A.	Associate Professor	Ancient India	27+	Nil
Parthpratin Patra	M.A., B.Ed.	Part-time Teacher	Modern India	12+	Nil
Piyali Pachhal	M.A., B.Ed.	Part-time Teacher	Modern India	12+	Nil

Hafija Mullick	M.A., B.Ed.	Part-time Teacher	Islamic India	11+	Nil
----------------	-------------	-------------------	---------------	-----	-----

11. List of senior visiting faculty: Nil
12. Percentage of lectures delivered and practical classes handled(programme wise) by temporary faculty: 60%
13. Student -Teacher Ratio (programme wise): Hons. 23:1 Gen 149:1
14. Number of academic support staff (technical) and administrative staff; sanctioned and filled: NA
15. Qualifications of teaching faculty with DSc/ D.Litt/ Ph.D/ MPhil / PG.: PG=4
16. Number of faculty with ongoing projects from a) National b) International funding agencies and grants received: Nil
17. Departmental projects funded by DST - FIST; UGC, DBT, ICSSR, etc. and total grants received: Nil
18. Research Centre /facility recognized by the University: Nil
19. Publications: Nil

a) Publication per faculty

Number of papers published in peer reviewed journals (national / international) by faculty and students

Number of publications listed in International Database (For Eg: Web of Science, Scopus, Humanities International Complete, Dare Database - International Social Sciences Directory, EBSCO host, etc.)

Monographs

Chapter in Books

Books Edited

Books with ISBN/ISSN numbers with details of publishers

Citation Index

SNIP

SJR

Impact factor

h-index

Ans. Nil

20. Areas of consultancy and income generated: NA

21. Faculty as members in

- a) National committees
- b) International Committees
- c) Editorial Boards : Nil

22. Student projects: Nil

- a) Percentage of students who have done in-house projects including inter departmental/programme
- b) Percentage of students placed for projects in organizations outside the institution i.e.in Research laboratories/Industry/ other agencies

23. Awards / Recognitions received by faculty and students: Nil

24. List of eminent academicians and scientists / visitors to the department: Nil

25. Seminars/ Conferences/Workshops organized & the source of funding

- a) National : Nil
- b) International: Nil

26. Student profile programme/course wise: 2015-16

Name of the Course/programme (refer question no. 4)	Applications received	Selected	Enrolled		Pass percentage Part-III
			*M	*F	
B.A. (Hons.)	100	61	24	21	100%
B.A. (Gen)	274	274	93	181	66%

*M = Male *F = Female

27. Diversity of Students

Name of the Course	% of students from the same state	% of students from other States	% of students from abroad
B.A.(Honours)	100%	Nil	Nil
B.A. (General)	100%	Nil	Nil

--	--	--	--

28. How many students have cleared national and state competitive examinations such as NET, SLET, GATE, Civil services, Defense services, etc.? : NA

29. Student progression

Student progression	Against % enrolled
UG to PG	NA
PG to M.Phil.	NA
PG to Ph.D.	NA
Ph.D. to Post-Doctoral	NA
Employed É Campus selection É Other than campus recruitment	Nil
Entrepreneurship/Self-employment	Nil

30. Details of Infrastructural facilities

a) Library

b) Internet facilities for Staff & Students

c) Class rooms with ICT facility

d) Laboratories

31. Number of students receiving financial assistance from college, university, government or other agencies: Data not available

32. Details on student enrichment programmes (special lectures / workshops / seminar) with external experts: Nil

33. Teaching methods adopted to improve student learning: ICT enabled

34. Participation in Institutional Social Responsibility (ISR) and Extension activities: Students participate through NSS for community development

35. SWOC analysis of the department and Future plans

Strength: Good relationship between the teachers and the students.
 Homely atmosphere.
 Personal care by the teachers
 Demand for the subject

Weakness: Students are all from rural background.
They are mostly first generation learners.
Lack of bright students.

Future Plans: To build a Departmental Library.
To add to the number of books available in the College library.
To provide the students with more ICT facilities.

Evaluative Report of the Department of Education

1. Name of the department: Education
2. Year of Establishment: 1986 (General) 2007 (Honours)
3. Names of Programmes / Courses offered (UG, PG, M.Phil., Ph.D., Integrated Masters; Integrated Ph.D., etc.) : UG (Hons. & Gen.)
4. Names of Interdisciplinary courses and the departments/units involved: Nil
5. Annual/ semester/choice based credit system (programme wise): Annual
6. Participation of the department in the courses offered by other departments: Nil
7. Courses in collaboration with other universities, industries, foreign institutions, etc.: Nil
8. Details of courses/programmes discontinued (if any) with reasons: Nil
9. Number of Teaching posts

	Sanctioned	Filled
Professors	Nil	Nil
Associate Professors	Nil	Nil
Asst. Professors	01	01

10. Faculty profile with name, qualification, designation, specialization, (D.Sc./D.Litt. /Ph.D. / M. Phil. etc.,)

Name	Qualification	Designation	Specialization	No. of Years of Experience	No. of Ph.D. Students guided for the last 4 years
Saswati Maiumder	M.A., B.Ed.	Assistant Professor	Comparative Education	14	Nil
Puja Banerjee	M.A., B.Ed.	Part-time Teacher	Curriculum Studies	5	Nil
Namita Singha	M.A.	Adhoc Teacher	Special Need Env. Edn.	1	Nil

11. List of senior visiting faculty: Nil

12. Percentage of lectures delivered and practical classes handled(programme wise) by temporary faculty: 50%
13. Student -Teacher Ratio (programme wise): Hons. 42:1 Gen.197:1
14. Number of academic support staff (technical) and administrative staff; sanctioned and filled: NA
15. Qualifications of teaching faculty with DSc/ D.Litt/ Ph.D/ MPhil / PG.: PG=3
16. Number of faculty with ongoing projects from a) National b) International funding agencies and grants received: Nil
17. Departmental projects funded by DST - FIST; UGC, DBT, ICSSR, etc. and total grants received: Nil
18. Research Centre /facility recognized by the University: Nil
19. Publications: Nil

a) Publication per faculty

Number of papers published in peer reviewed journals (national / international) by faculty and students

Number of publications listed in International Database (For Eg: Web of Science, Scopus, Humanities International Complete, Dare Database - International Social Sciences Directory, EBSCO host, etc.)

Monographs

Chapter in Books

Books Edited

Books with ISBN/ISSN numbers with details of publishers

Citation Index

SNIP

SJR

Impact factor

h-index

Ans. Nil.

20. Areas of consultancy and income generated: Nil

21. Faculty as members in

a) National committees

b) International Committees

c) Editorial Boardsí . : Nil

22. Student projects: Nil

- a) Percentage of students who have done in-house projects including inter departmental/programme

Ans. All students in Education Honours complete projects as part of their B.A. Degree programme and they are examined by external experts

- b) Percentage of students placed for projects in organizations outside the institution i.e.in Research laboratories/Industry/ other agencies

23. Awards / Recognitions received by faculty and students: Nil

24. List of eminent academicians and scientists / visitors to the department: Nil

25. Seminars/ Conferences/Workshops organized & the source of funding

a) National : Nil

b) International : Nil

26. Student profile programme/course wise: (2015-16)

Name of the Course/programme (refer question no. 4)	Applications received	Selected	Enrolled		Pass percentage Part-III
			*M	*F	
B.A. Honours	155	73	25	54	100%
B.A. General	290	290	103	187	94.2%

*M = Male *F = Female

27. Diversity of Students

Name of the Course	% of students from the same state	% of students from other States	% of students from abroad
B.A. (Honours)	100%	Nil	Nil
B.A. (General)	100%	Nil	Nil

28. How many students have cleared national and state competitive examinations such as NET, SLET, GATE, Civil services, Defense services, etc.? : NA

29. Student progression

Student progression	Against % enrolled
UG to PG	NA
PG to M.Phil.	NA
PG to Ph.D.	NA
Ph.D. to Post-Doctoral	NA
Employed	Nil
<input type="checkbox"/> Campus selection <input type="checkbox"/> Other than campus recruitment	
Entrepreneurship/Self-employment	Nil

30. Details of Infrastructural facilities

- a) Library
- b) Internet facilities for Staff & Students
- c) Class rooms with ICT facility
- d) Laboratories

31. Number of students receiving financial assistance from college, university, government or other agencies: Data not available

32. Details on student enrichment programmes (special lectures / workshops / seminar) with external experts: Nil

33. Teaching methods adopted to improve student learning: ICT enabled

34. Participation in Institutional Social Responsibility (ISR) and Extension activities: The students reach out to the community through the different NSS programmes.

35. SWOC analysis of the department and Future plans:

Strength: There is a demand among the students for the course.
Students are doing well in the university examinations.

Weakness: Lack of number of teachers
Lack of adequate infra structure

Opportunities: Students of education have as much employment opportunities as any student of Arts stream

Challenges: Mushrooming of private coaching centres even in such remote villages.

Evaluative Report of the Department of Philosophy

1. Name of the department : Philosophy
2. Year of Establishment : 1986 (General)
3. Names of Programmes / Courses offered (UG, PG, M.Phil., Ph.D., Integrated Masters; Integrated Ph.D., etc.) : UG(General)
4. Names of Interdisciplinary courses and the departments/units involved: Nil
5. Annual/ semester/choice based credit system (programme wise): Annual
6. Participation of the department in the courses offered by other departments: Nil
7. Courses in collaboration with other universities, industries, foreign institutions, etc.: Nil
8. Details of courses/programmes discontinued (if any) with reasons: Nil
9. Number of Teaching posts

	Sanctioned	Filled
Professors	Nil	Nil
Associate Professors	01	01
Asst. Professors	Nil	Nil

10. Faculty profile with name, qualification, designation, specialization, (D.Sc./D.Litt. /Ph.D. / M. Phil. etc.,)

Name	Qualification	Designation	Specialization	No. of Years of Experience	No. of Ph.D. Students guided for the last 4 years
Sabita Chakraborty	M.A., Ph.D.	Associate Professor	Indian Philosophy	29	Nil

11. List of senior visiting faculty: Nil

12. Percentage of lectures delivered and practical classes handled(programme wise) by temporary faculty: Nil
13. Student -Teacher Ratio (programme wise): 76:1
14. Number of academic support staff (technical) and administrative staff; sanctioned and filled: NA
15. Qualifications of teaching faculty with DSc/ D.Litt/ Ph.D/ MPhil / PG.: Ph.D.=1
16. Number of faculty with ongoing projects from a) National b) International funding agencies and grants received: Nil
17. Departmental projects funded by DST - FIST; UGC, DBT, ICSSR, etc. and total grants received: Nil
18. Research Centre /facility recognized by the University: Nil
19. Publications:
 - a) Publication per faculty

BOOKS & ARTICLES

1. Sahajiya twattaøin SABDAMALA, No. 35, OCTOBER, 2011,Underground Sahitya, Kolaghat Chapter
2. Wittgensteiner Darsane Japaner Prekshapat in Wittgenstein : Jagat Bhasa o Chintan,edited by Tusher Kanti Sarker, Shefali Moitra & Indrani Sanyal,Allied Publishers Limited in association with Jadavpur University, First Edition, Kolkata, 1998. ISBN NO of The Allied Publishers ISBN 81-7023-736-X
3. Form of Life : Akti Darsanik Samiksha, Underground Sahitya, Kolkata, 2011
4. Bauddha Sahitye Triratnaøin Platform, 2012
5. Adhunik Manane Nalander Smrti ebam Bhagaban Naropaøin NALANDA, 2010
6. Prakriti o Paribesh in Sabuj Prithivi Vol. 16 2011
7. Review : Unnayaner Galpo Written by Nandita Bhattacharyya in AIKYA PATRIKA,Vol 12 Issue 11, March 2012. AIKYA PATRIKA Decl. No. WBBEN 12260/25/1/2003/TC/357
8. Postmodernism ebam Rabindranath, in SABDAMALA, No. 36, April 2012

9. Surangama Sutra, in THE NALANDA, VOL. XLIV-XLVII, MAY 2012
10. Samjukta Nikaya o Bhagaban Buddha in Sabdamala , no. 37, October 2012
11. RAMPRASADER GAAN IN Platform 2012
12. Rabindra Chintay Chatra Samaj JPR COLLEGE Magazine, 2012
13. Vipade More Rakshya KARO in JPR College Magazine, 2012
14. Wittgenstein Reconsidered, Underground Sahitya, Kolkata, 2013
15. Ramprasad Sener Mrityu Bhavna in SABDAMALA, No. 40, April, 2014
16. Review : Roland Barths Fire Dekha, Written by Dr. Ramesh Chandra Mukhopadhyay in Platform Vol. 3, Issue 1, May 2014
17. Dharmapade Monø in Sabdamala, No. 41, October 2014.
18. Bartaman Samajer Sankat : ekti Aalochanaø in Platform, Vol 3, Issue 11, December 2014
19. Sukhø in Sabdamala, No. 42, April 2015
20. Lord Buddhaø in Platform, Vol. 4, Issue 1, June 2015. ISSN NO of the Little Magazine 'PLATFORM' 2347-5242
21. Prantik in Sabdamala, No. 43, October 2015
22. Close Reading in Platform, 4th year, No. 2, December 2015
23. Bauddha Manastattwa, in Nalanda, (to be published) ISSN NO of the Journal 'Nalanda' ISSN 2320-7264
24. Prosanga Ramprasad (to be published by the Mahabodhi Society, 4A Bankim Chatterjee Street, Kolkata - 700073)

Number of papers published in peer reviewed journals (national / international) by faculty and students

Number of publications listed in International Database (For Eg:

Web of Science, Scopus, Humanities International Complete, Dare Database - International Social Sciences Directory, EBSCO host, etc.)

Monographs

Chapter in Books

Books Edited

Books with ISBN/ISSN numbers with details of publishers

Citation Index

SNIP

SJR

Impact factor

h-index

20. Areas of consultancy and income generated: Nil

21. Faculty as members in

a) National committees

b) International Committees

c) Editorial Boards : Nil

22. Student projects : Nil

a) Percentage of students who have done in-house projects including inter departmental/programme

b) Percentage of students placed for projects in organizations outside the institution i.e.in Research laboratories/Industry/ other agencies

23. Awards / Recognitions received by faculty and students: Nil

24. List of eminent academicians and scientists / visitors to the department: Nil

25. Seminars/ Conferences/Workshops organized & the source of funding

a) National: Nil

b) International:
Nil

26. Student profile programme/course wise: (2015-16)

Name of the Course/programme (refer question no. 4)	Applications received	Selected	Enrolled		Pass percentage Part-III
			*M	*F	
B.A. (General)	39	39	12	27	77%

*M = Male *F = Female

27. Diversity of Students

Name of the Course	% of students from the same state	% of students from other States	% of students from abroad
B.A. (General)	100%	Nil	Nil

28. How many students have cleared national and state competitive examinations such as NET, SLET, GATE, Civil services, Defense services, etc.? : NA

29. Student progression

Student progression	Against % enrolled
UG to PG	NA
PG to M.Phil.	NA
PG to Ph.D.	NA
Ph.D. to Post-Doctoral	NA
Employed EC Campus selection EO Other than campus recruitment	Nil
Entrepreneurship/Self-employment	Nil

30. Details of Infrastructural facilities

a) Library

b) Internet facilities for Staff & Students

c) Class rooms with ICT facility

d) Laboratories

31. Number of students receiving financial assistance from college, university, government or other agencies: Nil
32. Details on student enrichment programmes (special lectures / workshops / seminar) with external experts: Nil
33. Teaching methods adopted to improve student learning: ICT enabled
34. Participation in Institutional Social Responsibility (ISR) and Extension activities: The students participate in community development through different NSS activities.

35. SWOC analysis of the department and Future plans

Strength: The subject enables the student to think independently

Weakness: General apathy of the present day students to the subject.

Opportunities: Philosophy offers as much job opportunity as any other subject in the Arts stream.

Challenges: Lack of adequate number of students

Evaluative Report of the Department of Political Science

1. Name of the department: Political Science
2. Year of Establishment: 1986 (General)
3. Names of Programmes / Courses offered (UG, PG, M.Phil., Ph.D., Integrated Masters; Integrated Ph.D., etc.): UG(General)
4. Names of Interdisciplinary courses and the departments/units involved: Nil
5. Annual/ semester/choice based credit system (programme wise): Annual
6. Participation of the department in the courses offered by other departments: Nil
7. Courses in collaboration with other universities, industries, foreign institutions, etc.: Nil
8. Details of courses/programmes discontinued (if any) with reasons: Nil
9. Number of Teaching posts

	Sanctioned	Filled
Professors	Nil	Nil
Associate Professors	Nil	Nil
Asst. Professors	01	00

10. Faculty profile with name, qualification, designation, specialization, (D.Sc./D.Litt. /Ph.D. / M. Phil. etc.,)

Name	Qualification	Designation	Specialization	No. of Years of Experience	No. of Ph.D. Students guided for the last 4 years
Pahari Sankar Das	M.A.	Part-time Teacher	Political Sociology	21	Nil

11. List of senior visiting faculty: Nil
12. Percentage of lectures delivered and practical classes handled(programme wise) by temporary faculty: 100%
13. Student -Teacher Ratio (programme wise): Gen. 455:1
14. Number of academic support staff (technical) and administrative staff; sanctioned and filled: NA
15. Qualifications of teaching faculty with DSc/ D.Litt/ Ph.D/ MPhil / PG.: PG=1
16. Number of faculty with ongoing projects from a) National b) International funding agencies and grants received: Nil
17. Departmental projects funded by DST - FIST; UGC, DBT, ICSSR, etc. and total grants received: Nil
18. Research Centre /facility recognized by the University: Nil
19. Publications: Nil

a) Publication per faculty

Number of papers published in peer reviewed journals (national / international) by faculty and students

Number of publications listed in International Database (For Eg: Web of Science, Scopus, Humanities International Complete, Dare Database - International Social Sciences Directory, EBSCO host, etc.)

Monographs

Chapter in Books

Books Edited

Books with ISBN/ISSN numbers with details of publishers

Citation Index

SNIP

SJR

Impact factor

h-index

Ans. Nil.

20. Areas of consultancy and income generated : Nil

21. Faculty as members in

- a) National committees
- b) International Committees

c) Editorial Boards : Nil

22. Student projects: Nil

a) Percentage of students who have done in-house projects including inter departmental/programme

b) Percentage of students placed for projects in organizations outside the institution i.e.in Research laboratories/Industry/ other agencies

23. Awards / Recognitions received by faculty and students:Nil

24. List of eminent academicians and scientists / visitors to the department: Nil

25. Seminars/ Conferences/Workshops organized & the source of funding

a) National: Nil

b) International: Nil

26. Student profile programme/course wise:

Name of the Course/programme (refer question no. 4)	Applications received	Selected	Enrolled		Pass percentage Part-III
			*M	*F	
B.A. General	258	258	102	156	81%

*M = Male *F = Female

27. Diversity of Students

Name of the Course	% of students from the same state	% of students from other States	% of students from abroad
B.A. (General)	100%	Nil	Nil

28. How many students have cleared national and state competitive examinations such as NET,

SLET, GATE, Civil services, Defense services, etc.? NA

29. Student progression

Student progression	Against % enrolled
UG to PG	NA
PG to M.Phil.	NA
PG to Ph.D.	NA
Ph.D. to Post-Doctoral	NA
Employed É Campus selection É Other than campus recruitment	Nil
Entrepreneurship/Self-employment	Nil

30. Details of Infrastructural facilities

- a) Library
- b) Internet facilities for Staff & Students
- c) Class rooms with ICT facility
- d) Laboratories

31. Number of students receiving financial assistance from college, university, government or other agencies: Nil

32. Details on student enrichment programmes (special lectures / workshops / seminar) with external experts: Nil

33. Teaching methods adopted to improve student learning: ICT enabled

34. Participation in Institutional Social Responsibility (ISR) and Extension activities: The Students participate in ISR and Extension activities through NSS programmes

35. SWOC analysis of the department and Future plans:

Weakness: Lack of infrastructure

Lack of permanent teachers

Challenges: Mushrooming of private coaching institute even in the rural area.

Evaluative Report of the Department of Physical Education

1. Name of the department : Physical Education
2. Year of Establishment: 2001
3. Names of Programmes / Courses offered (UG, PG, M.Phil., Ph.D., Integrated Masters; Integrated Ph.D., etc.): UG(General)
4. Names of Interdisciplinary courses and the departments/units involved: Nil
5. Annual/ semester/choice based credit system (programme wise):Nil
6. Participation of the department in the courses offered by other departments: Nil
7. Courses in collaboration with other universities, industries, foreign institutions, etc.: Nil
8. Details of courses/programmes discontinued (if any) with reasons: Nil
9. Number of Teaching posts

	Sanctioned	Filled
Professors	Nil	Nil
Associate Professors	Nil	Nil
Asst. Professors	Nil	Nil

10. Faculty profile with name, qualification, designation, specialization, (D.Sc./D.Litt. /Ph.D. / M. Phil. etc.,)

Name	Qualification	Designation	Specialization	No. of Years of Experience	No. of Ph.D. Students guided for the last 4 years
Ashek Rosul	M.P. Ed.	Adhoc Teacher	Sports Medicine	14	Nil
Mohua Maity	M.P. Ed.	Adhoc Teacher	khokho	3	Nil
Sahib Barui	M.P. Ed.	Adhoc Teacher	Football	1	Nil

11. List of senior visiting faculty: Nil

12. Percentage of lectures delivered and practical classes handled(programme wise) by temporary faculty: 100%
13. Student -Teacher Ratio (programme wise): 66:1
14. Number of academic support staff (technical) and administrative staff; sanctioned and filled: NA
15. Qualifications of teaching faculty with DSc/ D.Litt/ Ph.D/ MPhil / PG.: PG=3
16. Number of faculty with ongoing projects from a) National b) International funding agencies and grants received: Nil
17. Departmental projects funded by DST - FIST; UGC, DBT, ICSSR, etc. and total grants received: Nil
18. Research Centre /facility recognized by the University: Nil
19. Publications: Nil

a) Publication per faculty

Number of papers published in peer reviewed journals (national / international) by faculty and students

Number of publications listed in International Database (For Eg: Web of Science, Scopus, Humanities International Complete, Dare Database - International Social Sciences Directory, EBSCO host, etc.)

Monographs

Chapter in Books

Books Edited

Books with ISBN/ISSN numbers with details of publishers

Citation Index

SNIP

SJR

Impact factor

h-index

Ans. Nil

20. Areas of consultancy and income generated: Nil

21. Faculty as members in

a) National committees

b) International Committees

c) Editorial Boardsí .: Nil

22. Student projects: Nil

- a) Percentage of students who have done in-house projects including inter departmental/programme
- b) Percentage of students placed for projects in organizations outside the institution i.e.in Research laboratories/Industry/ other agencies

23. Awards / Recognitions received by faculty and students: Nil

24. List of eminent academicians and scientists / visitors to the department: Nil

25. Seminars/ Conferences/Workshops organized & the source of funding

a) National : Nil

b) International: Nil

26. Student profile programme/course wise:

Name of the Course/programme (refer question no. 4)	Applications received	Selected	Enrolled		Pass percentage Part-III
			*M	*F	
B.A. General	92	92	60	30	97%

*M = Male *F = Female

27. Diversity of Students

Name of the Course	% of students from the same state	% of students from other States	% of students from abroad
B.A.(General)	100%	Nil	Nil

28. How many students have cleared national and state competitive examinations such as NET, SLET, GATE, Civil services, Defense services, etc.?

29. Student progression

Student progression	Against % enrolled
UG to PG	NA
PG to M.Phil.	NA
PG to Ph.D.	NA
Ph.D. to Post-Doctoral	NA
Employed EC ampus selection EO ther than campus recruitment	Nil
Entrepreneurship/Self-employment	Nil

30. Details of Infrastructural facilities

- a) Library
- b) Internet facilities for Staff & Students
- c) Class rooms with ICT facility
- d) Laboratories

31. Number of students receiving financial assistance from college, university, government or other agencies: Data not available

32. Details on student enrichment programmes (special lectures / workshops / seminar) with external experts:

33. Teaching methods adopted to improve student learning: Practical demonstration

34. Participation in Institutional Social Responsibility (ISR) and Extension activities:
 Students participate in ISR and Extension Activities through NSS programmes.

35. SWOC analysis of the department and Future plans

Strength: Demand among the student community

Good shows in the inter university meets

Weakness: lack of adequate infrastructure

Lack of permanent teachers

Opportunities: Students can develop their sporting talent

Future Plans: Development of the College playground under Rajiv Gandhi Khel joyona

Full time faculty engagement.

Evaluative Report of the Department of Commerce

1. Name of the department: Commerce
2. Year of Establishment: 1988(General) 2000 (Honours)
3. Names of Programmes / Courses offered (UG, PG, M.Phil., Ph.D., Integrated Masters; Integrated Ph.D., etc.): UG(Honours & General)
4. Names of Interdisciplinary courses and the departments/units involved: Nil
5. Annual/ semester/choice based credit system (programme wise):Annual
6. Participation of the department in the courses offered by other departments: Nil
7. Courses in collaboration with other universities, industries, foreign institutions, etc.Nil
8. Details of courses/programmes discontinued (if any) with reasons: Nil
9. Number of Teaching posts

	Sanctioned	Filled
Professors	Nil	Nil
Associate Professors	02	02
Asst. Professors	02	01

10. Faculty profile with name, qualification, designation, specialization, (D.Sc./D.Litt. /Ph.D. / M. Phil. etc.,)

Name	Qualification	Designation	Specialization	No. of Years of Experience	No. of Ph.D. Students guided for the last 4 years
Kashinath Pal	M.Com.	Associate Professor	Accounting	20	Nil
Debika Mukherjee	M.Com.	Associate Professor	Accounting	16	Nil
Manoj Kr. Singh	M.Com.	Assistant Teacher	Accounting	01	Nil

Buddhadeb Ghosh	M.Com.	Part-time Teacher	Accounting	15	Nil
Rakesh Kr. Bhagat	M.Com.	Part-time Teacher	Accounting	14	Nil
Tusharkanti Mahapatra	M.Com. B.Ed.	Part-time Teacher	Accounting	8	Nil

11. List of senior visiting faculty: Nil
12. Percentage of lectures delivered and practical classes handled(programme wise) by temporary faculty: 33%
13. Student -Teacher Ratio (programme wise): Hons 10:1 General 4:1
14. Number of academic support staff (technical) and administrative staff; sanctioned and filled: Nil
15. Qualifications of teaching faculty with DSc/ D.Litt/ Ph.D/ MPhil / PG.: PG =6
16. Number of faculty with ongoing projects from a) National b) International funding agencies and grants received: Nil
17. Departmental projects funded by DST - FIST; UGC, DBT, ICSSR, etc. and total grants received: Nil
18. Research Centre /facility recognized by the University: Nil
19. Publications:
 - a) Publication per faculty

Ans. Manoj Kumar Singh: FDI in Retail, Panchokot SS, ISSN No. 0976-4968

Number of papers published in peer reviewed journals (national / international) by faculty and students

Number of publications listed in International Database (For Eg: Web of Science, Scopus, Humanities International Complete, Dare Database - International Social Sciences Directory, EBSCO host, etc.)

Monographs

Chapter in Books

Books Edited

Books with ISBN/ISSN numbers with details of publishers

Citation Index

SNIP

SJR

Impact factor

h-index

20. Areas of consultancy and income generated: Nil

21. Faculty as members in

a) National committees

b) International Committees

c) Editorial Boardsí . :Nil

22. Student projects : Nil

a) Percentage of students who have done in-house projects including inter departmental/programme

Ans. All students of B.Com. Honours course must complete their projects and they are examined by external experts.

b) Percentage of students placed for projects in organizations outside the institution i.e.in Research laboratories/Industry/ other agencies

23. Awards / Recognitions received by faculty and students: Nil

24. List of eminent academicians and scientists / visitors to the department: Nil

25. Seminars/ Conferences/Workshops organized & the source of funding

a) National : Nil

b) International: Nil

26. Student profile programme/course wise: 2015-16

Name of the Course/programme (refer question no. 4)	Applications received	Selected	Enrolled		Pass percentage Part-III
			*M	*F	
B.Com. Honours	49	49	35	07	26%
B.Com General	04	04	04	0	83%

*M = Male *F = Female

27. Diversity of Students

Name of the Course	% of students from the same state	% of students from other States	% of students from abroad
B. Com. (Honours)	100%	Nil	Nil
B.Com.(General)	100%	Nil	Nil

28. How many students have cleared national and state competitive examinations such as NET, SLET, GATE, Civil services, Defense services, etc.? : NA

29. Student progression

Student progression	Against % enrolled
UG to PG	NA
PG to M.Phil.	NA
PG to Ph.D.	NA
Ph.D. to Post-Doctoral	NA
Employed ☐ Campus selection ☐ Other than campus recruitment	Nil
Entrepreneurship/Self-employment	Nil

30. Details of Infrastructural facilities

a) Library

b) Internet facilities for Staff & Students

c) Class rooms with ICT facility

d) Laboratories

31. Number of students receiving financial assistance from college, university, government or other agencies:

32. Details on student enrichment programmes (special lectures / workshops / seminar) with external experts: Nil

33. Teaching methods adopted to improve student learning: ICT enabled and Practical demonstration

34. Participation in Institutional Social Responsibility (ISR) and Extension activities:
Through different NSS programmes the students participate in ISR and Extension activities.
35. SWOC analysis of the department and Future plans

Strength: Good relationship between the teachers and the students.

Homely atmosphere.

Personal care by the teachers

Weakness: Students are all from rural background.

They are mostly first generation learners.

Lack of bright students.

Future Plans: To build a Departmental Library.

To add to the number of books available in the College library.

To provide the students with more ICT facilities.

5. Post-accreditation Initiatives

If the college has already undergone the accreditation process by NAAC, please highlight the significant quality sustenance and enhancement measures undertaken during the last four years. The narrative may not exceed ten pages. (Refer section IX of Guidelines for Assessment and Accreditation)

Our College was accredited by NAAC in March, 2007 and since then we have tried within our limited resources to advance and follow the directives as mentioned in the Peer Team Report. The following is a summary of what we have achieved by way of progress over the past years.

Criterion I: Curricular Aspects :

As an affiliated college of the University of Calcutta, we follow closely the curriculum provided to us as we used to do in the past. Students passing out of the College apply for entry into the parent university and they also choose the different correspondence courses run by different universities. Our College acts as the Admission centre of Netaji Subhas Open University. The College maintains the same manners in the contribution to the development of education in the rural area. Some of the procedures are:

1. Follow the academic calendar of the University of Calcutta.
2. Complete the course within a definite time frame.
3. Encourage the students to pursue PG Courses through NSOU.
4. Be student friendly to the first generation of learners

Criterion II: Teaching, Learning and Evaluation:

Within its very limited resources and even after suffering from a severe shortage of teachers, the College has been trying to look after the welfare of its students in the best possible way. The measures taken are as follows:

1. IQAC conducts meeting with the teachers to understand the needs
2. The teachers participate in the seminars and workshops conducted by the University and the different colleges.

3. New computers are procured.
4. Projector is purchased
5. Midterm and Annual Tests are conducted
6. Two permanent teachers, one each in the departments of Bengali and Commerce have been recruited through College Service Commission, West Bengal.
7. Adhoc Teachers are recruited to meet the requirements

Criterion III: Research, Consultancy and Extension:

The College on its own does not have much scope for research but all help is extended if the faculty member is willing to do it.

1. Assistant Professor Banani Dolui is pursuing her Ph.D at Viswabharati University, Bolpur Santiniketan.
2. The researcher can make use of the books and computer facilities.
3. The number of Units of NSS has increased to five.
4. Regular and special camps of NSS are organized.

Criterion IV: Infrastructure and Learning Resources:

In 2007, at the time first accreditation, the College had seven classrooms in built up area. The rest of the classes were held in the tin shed with the College started. Now,

1. New classrooms are built taking the tally to 18.
2. Separate Administrative Block has been built.
3. Office is now spacious and newly built.
4. Separate Common rooms for boys and girls have been built.
5. Playground is being developed.
6. Separate Hostels for boys and girls are being built.
7. Flood Rescue Centre is nearing completion.
8. In 2007, there were only three computers and two inject printers. Now we have 18 computers, one computer lab for commerce, three Xerox machines, two multifunctional printers, one colour printer, four laser printers etc.
9. Spacious separate toilets for boys and girls have been built.
10. Six purified cool drinking water with Aqua Guard facilities have been installed.

Criterion V: Student Support and Progression:

In 2007, we could not even think of an website. But now the college not only has an website but the Admission process has been made online.

1. Any one can reach us through our website: www.joypurproycollege.in
2. Online Admission on a stand- alone basis has been introduced.
3. Like as usual, the annual prospectus is published.
4. The motto is to reach the unreached, to bring every H.S. pass-out of the area under the banner of college education.
5. Government scholarships are available as usual.
6. Free and Half-free studentship is granted to the needy.

Criterion VI: Governance, Leadership and Management:

Like in the past, the college has a duly formed Governing Body taking representatives from the stake holders.

1. Regular G.B. meetings are held.
2. Various committees look after the different areas.
3. College has achieved commendable success in sports and NSS

Criterion VII: Innovations and Best Practices:

From 2007, the College has changed its appearance.

1. The boundary wall has been erected.
2. Night lights have been put up.
3. The mission remains the same to stand by the deprived people of the villages

We are on the way of progress and our endeavour is to keep it up.

Declaration by the Head of the Institution

জয়পুর পঞ্চানন রায় কলেজ

(কলিকাতা বিশ্ববিদ্যালয় অনুমোদিত)

পোঃ-জয়পুর-ফকিরদাস ★ আমতা-২
হাওড়া-৭১১৪০১ (পঃ বঃ)



JOYPUR PANCHANAN ROY COLLEGE

(Affiliated to the University of Calcutta)

P.O. : Joypur-Fakirdas ★ Amta-II
Howrah - 711401 (W.B.)

From Kolkata : 03214-234 130
S.T.D. Code : (03214)

Ref.No.

Date 09/12/2015

6. Declaration by the Head of the Institution

I certify that the data included in this Self-study Report (SSR) are true to the best of my knowledge.

This SSR is prepared by the institution after internal discussions, and no part thereof has been outsourced.

I am aware that the Peer team will validate the information provided in this SSR during the peer team visit.

Signature of the Head of the institution
Principal & Secretary
Joypur Panchanan Roy College
P.O.- Joypur-Fakirdas, Amta-II
Dist. : Howrah - 711 401

Place: JOYPUR

Date: 09/12/2015



Certificate of Compliance

Certificate of Compliance

(Affiliated/ Constituent/ Autonomous Colleges and Recognized Institutions)

This is to certify that JOYPUR PANCHANAN ROY COLLEGE (Name of the institution) fulfils all norms

1. Stipulated by the affiliating University and/ or
2. Regulatory Council/ Body [such as UGC, NCTE, AICTE, MCI, DCI, BCI, etc.] and
3. The affiliation and recognition [if applicable] is valid as on date.

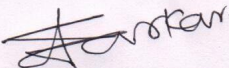
In case the affiliation / recognition is conditional, then a detailed enclosure with regard to compliance of conditions by the institution will be sent.

It is noted that NAAC's accreditation, if granted, shall stand cancelled automatically, once the institution loses its University affiliation or Recognition by the Regulatory Council, as the case may be.

In case the undertaking submitted by the institution is found to be false then the accreditation given by NAAC is liable to be withdrawn. It is also agreeable that the undertaking given to NAAC will be displayed on the college website.

Date: 12/12/2015.
Place: JOYPUR




Principal/Head of the Institution
(Name and Signature with Office seal)
(**PROF. SARMITRA SARKAR**)
Principal & Secretary
Joypur Panchanan Roy College
P.O.- Joypur-Fakirdas, Amta-II
Dist. : Howrah - 711 401

ANNEXURES

Annexure-1 Affiliation Certificate

Professor Sugata Marjit

M.A. (CAL), M.A. (Rochester, USA)

Ph.D. (Rochester, USA)

Vice-Chancellor

University of Calcutta



UNIVERSITY OF CALCUTTA

SENATE HOUSE, 87/1, COLLEGE STREET

KOLKATA-700 073, WEST BENGAL, INDIA

Phone : 2219-3763

Telefax : 2241-3288

Fax : 2257-3026

E-mail : marjit@gmail.com

smarjit@hotmail.com

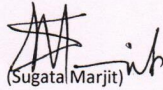
No.

DateNovember.27.,2015.....

TO WHOM IT MAY CONCERN

This is to certify that **Joypur Panchanan Roy College, P.O.- Joypur-Fakirdas, Amta-II, Howrah-711401, West Bengal**, is affiliated to the University of Calcutta since 1986 and recognised by the University Grants Commission and the following Courses/Subjects are taught in the said College as per approval:

Sl. No.	Name of the Course and Duration	Affiliation		Period of validity for the year
		Permanent	Temporary	
1	3-Year B.A. Honours Course in Bengali, English, History & Education	Permanent	
2	3-Year B.A. General Course in Bengali, English, History, Education, Philosophy, Political Science & Physical Education	Permanent	
3	3-Year B.Com. Honours Course in Accountancy	Permanent	
4	3-Year B.Com General Course	Permanent	


(Sugata Marjit)

Vice-Chancellor
Calcutta University

RBI Professor of Industrial Economics, Centre for Studies in Social Sciences, Calcutta
Former Chairman, West Bengal State Council of Higher Education
Member, State Planning Board, Government of West Bengal

UNIVERSITY GRANTS COMMISSION
BAHAUDDIN SHAH ZAFAR MARG
NEW DELHI.

F. No.8-30/91 (CPP-1)

October, 1995

The Registrar,
Calcutta University
Calcutta.

30 OCT 1995

Sub:- List of Colleges prepared under Section 2(f) of
the UGC, Act, 1956-Inclusion of New Colleges.

Sir,

I am directed to refer to your letter No. UGC/443/L-8
dated 14th June, 1995 on the above subject and to say that the
name of the following college has been included in the above
list under Non-Government college teaching upto Bachelor's
Degree :-

<u>Name of the College</u>	<u>Year of Estt.</u>	<u>Remarks</u>
Joypur Panchanan Roy College P.O. Joypur Fakirdas, Amta, Howrah. (Dr. Sukha Ranjan Mukhopadhy)	1986	The College is eligible to receive central assistance in terms of the rules framed under Section 12-B of the UGC of the UGC Act, 1956.

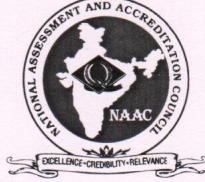
Yours faithfully,

J.C. Mittal
(J.C. Mittal
Under Secretary

Copy forwarded to :-

1. The Principal Joypur Panchanan Roy College P.O. Joypur
Fakirdas, Howrah.
2. The Secretary, Govt. of India, Ministry of Human Resource
Development, Dept. of Education, I-14 Section, New Delhi
3. Joint Secretary UGC North Eastern Regional Office, 3rd
floor, House Fed, Rental Block-5, Beltala, Basistha Rd,
Dispur, Guwahati-781006.
4. All Officers/Sections in the UGC Office.
5. S.O., FD-III/CE II Section, UGC, New Delhi.
6. Incharge Computer Cell, UGC, New Delhi.
7. Guard file

(D. B. Menta)
Section Officer



राष्ट्रीय मूल्यांकन एवं प्रत्यायन परिषद
विश्वविद्यालय अनुदान आयोग का स्वायत्त संस्थान
NATIONAL ASSESSMENT AND ACCREDITATION COUNCIL
An Autonomous Institution of the University Grants Commission

Certificate of Accreditation

*The Executive Committee of the
National Assessment and Accreditation Council
on the recommendation of the duly appointed
Peer Team is pleased to declare the
Joypur Panchanan Roy College
Joypur - Fakirdas, Howrah
affiliated to University of Calcutta, West Bengal as
Accredited
at the C⁺⁺ level.*

Date : March 31, 2007



Director
Director

- This certification is valid for a period of Five years with effect from March 31, 2007
- An institutional score (%) in the range of 55-60 denotes C grade, 60-65-C' grade, 65-70-C'' grade, 70-75- B grade, 75-80- B' grade, 80-85-B'' grade, 85-90- A grade, 90-95-A' grade, 95-100-A'' grade



राष्ट्रीय मूल्यांकन एवं प्रत्यायन परिषद
विश्वविद्यालय अनुदान आयोग का स्वायत्त संस्थान
NATIONAL ASSESSMENT AND ACCREDITATION COUNCIL
An Autonomous Institution of the University Grants Commission

Quality Profile

Name of the Institution : Joypur Panchanan Roy College

Place : Joypur - Fakirdas, Howrah, West Bengal

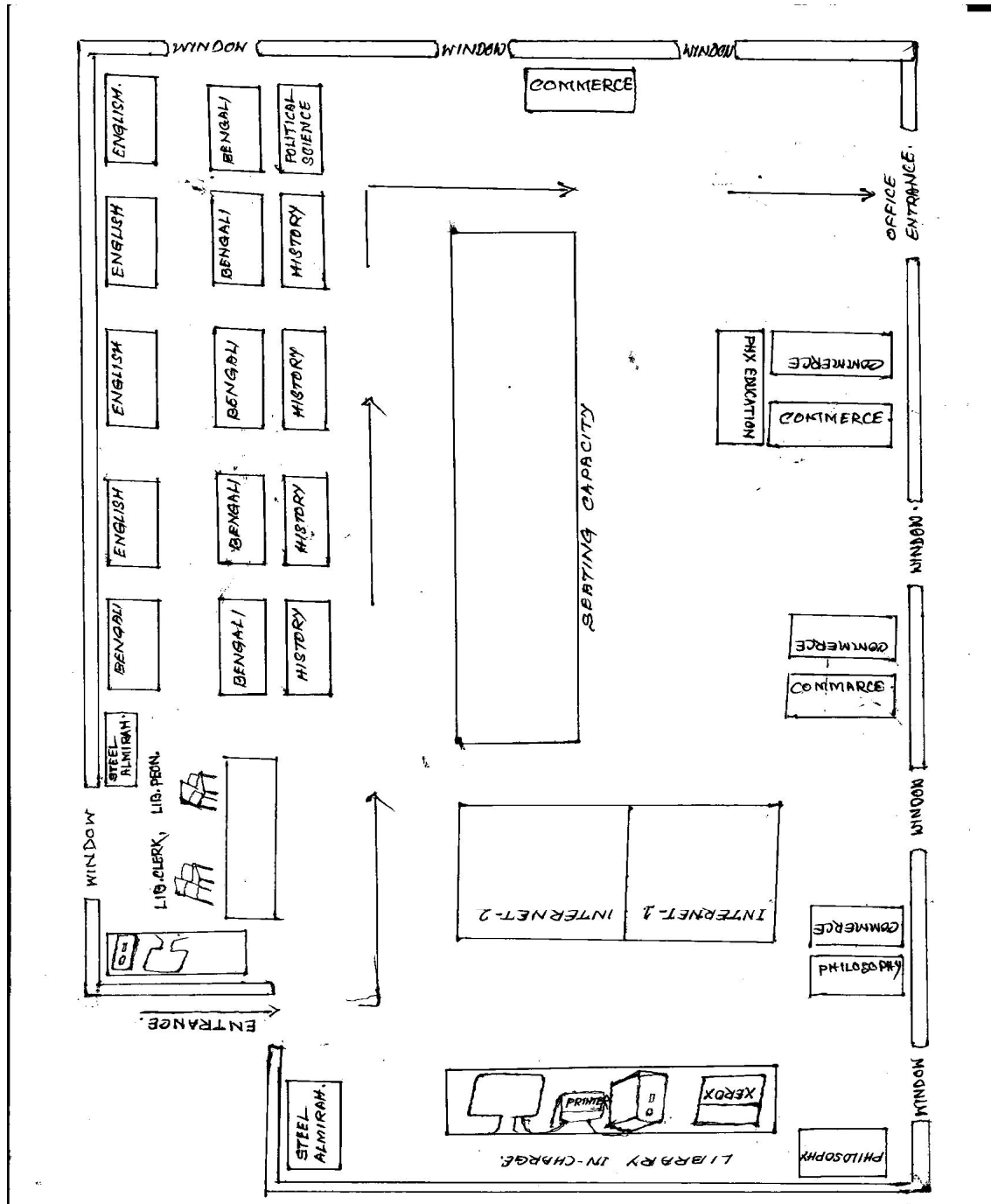
Criterion	Weightage (W _i)	Criterion Score (C _i)
I. Curricular Aspects	100	68
II. Teaching-Learning and Evaluation	400	273
III. Research, Consultancy and Extension	50	27
IV. Infrastructure and Learning Resources	150	98
V. Student Support and Progression	100	73
VI. Organization and Management	100	72
VII. Healthy Practices	100	65
Total	ΣW _i = 1000	ΣC _i = 676

$$\text{Institutional Score} = \frac{\sum C_i}{\sum W_i} \times 100 = \frac{676}{1000} \times 100 = 67.60$$

Date : March 31, 2007

K. and
Director

Annexure-V : Layout of the Library





End of Self Study Report

Joypur Panchanan Roy College

P.O.- Joypur-Fakirdas, Amta-II, Howrah-711401, West Bengal

Website: www.joypurproycollege.in

E-mail: joypurcollege@yahoo.in

Contact No. 03214-234-130

Mobile: 09732749040

